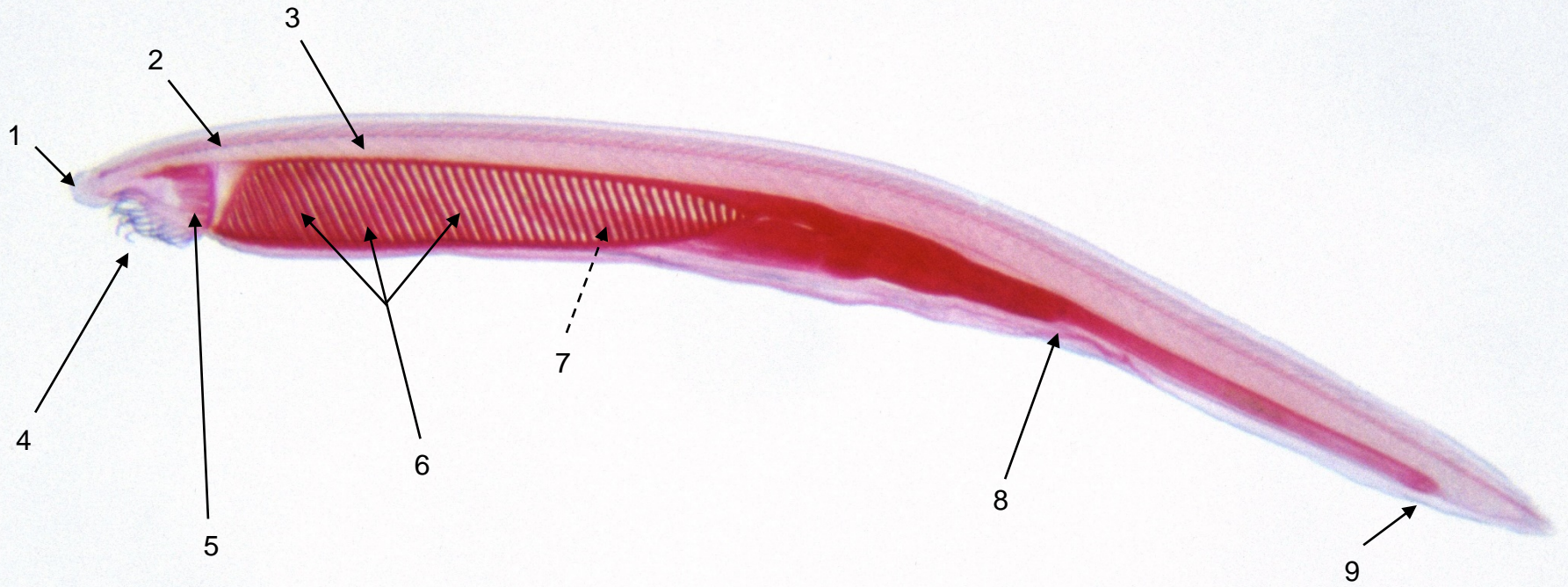
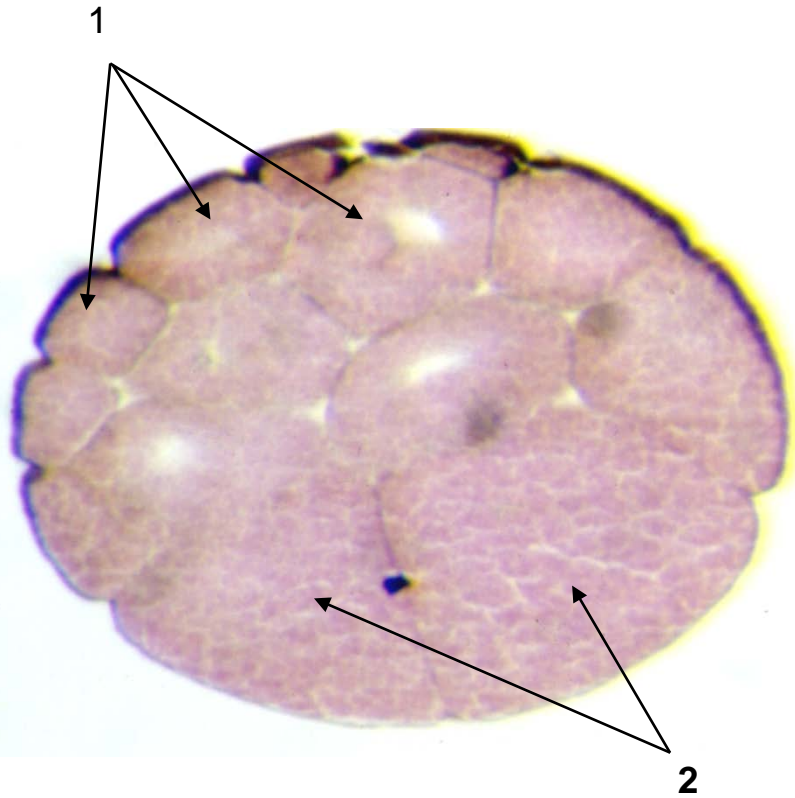


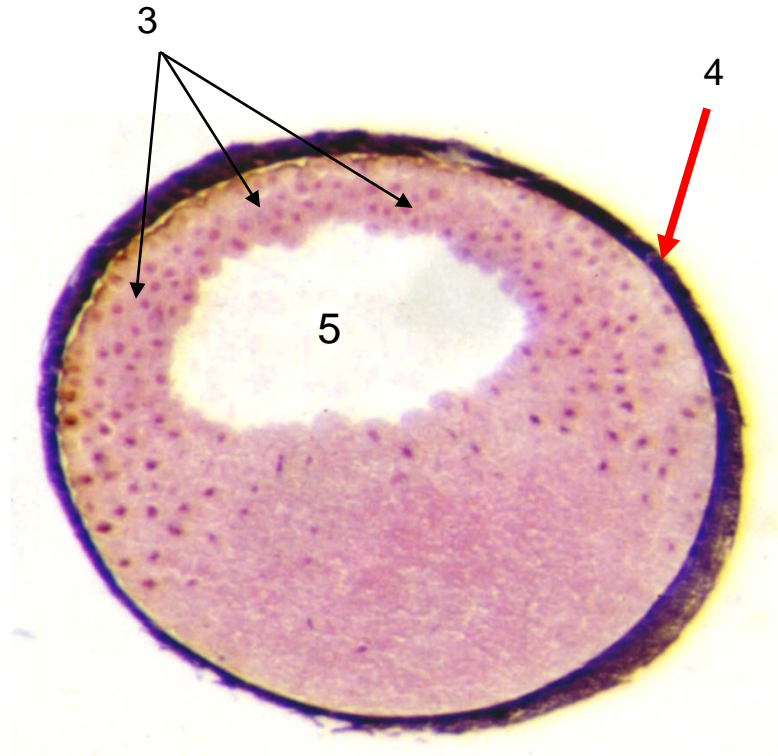
1 A: animale - B: stadio - C: tipo di preparato



2 A: animale - B: stadio - C: tipo di preparato

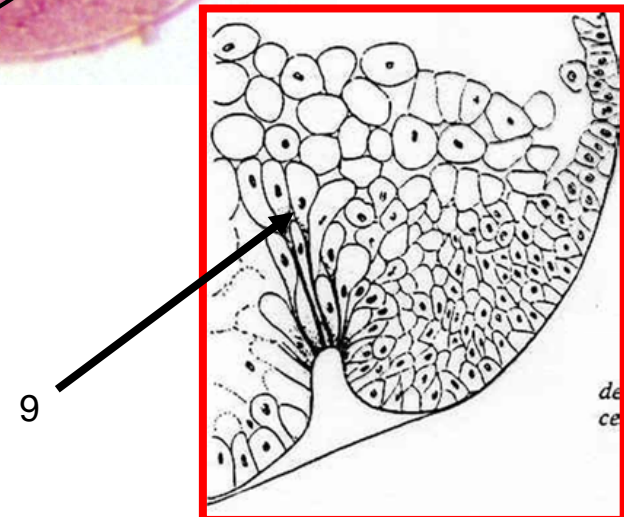
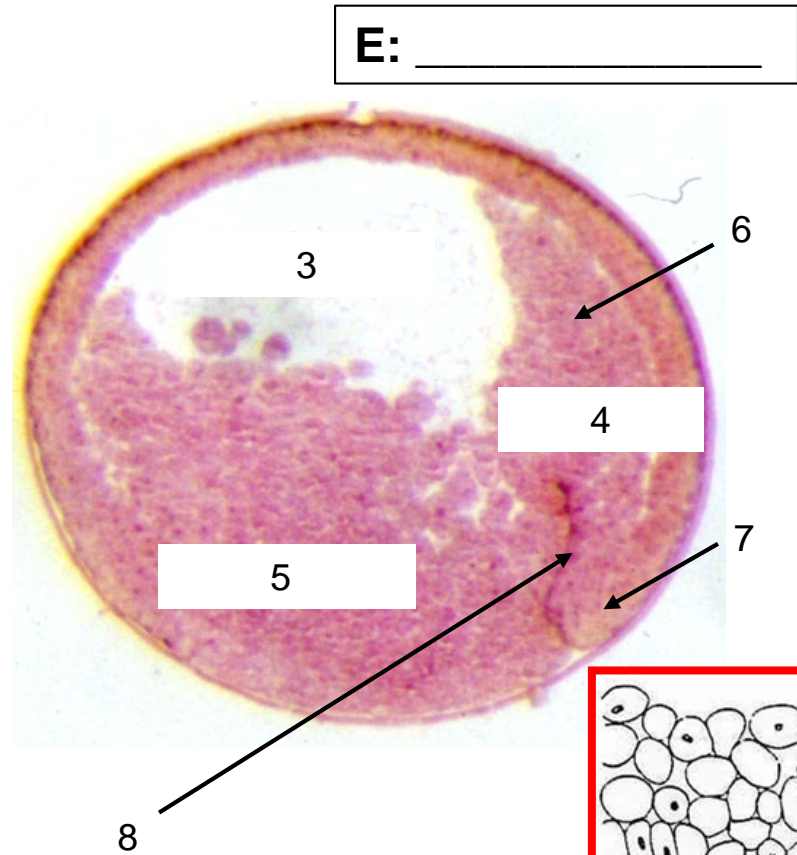
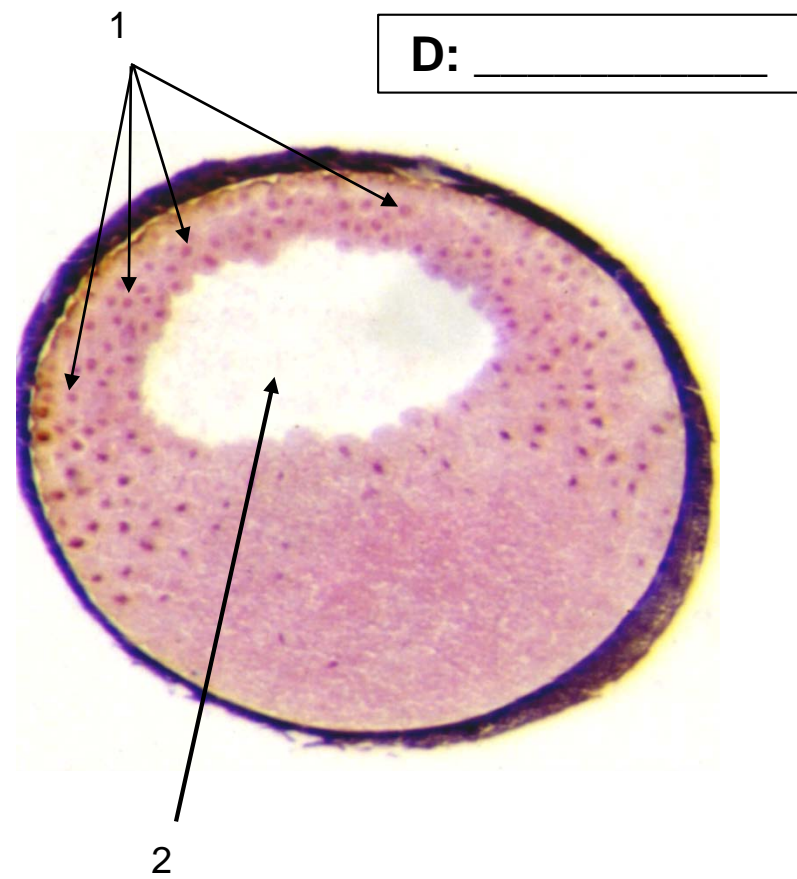


D: _____



E: _____

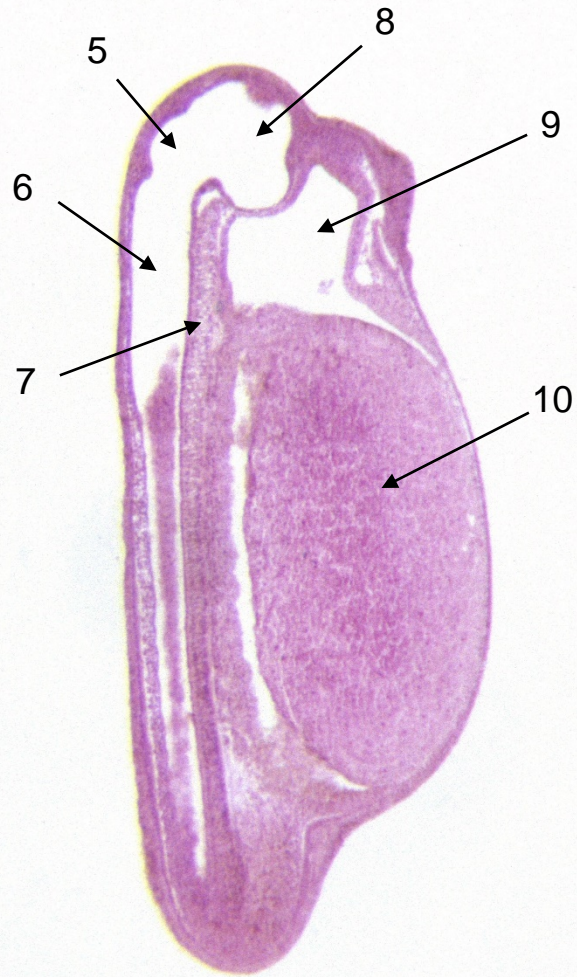
3 A: animale - B: stadio - C: tipo di preparato



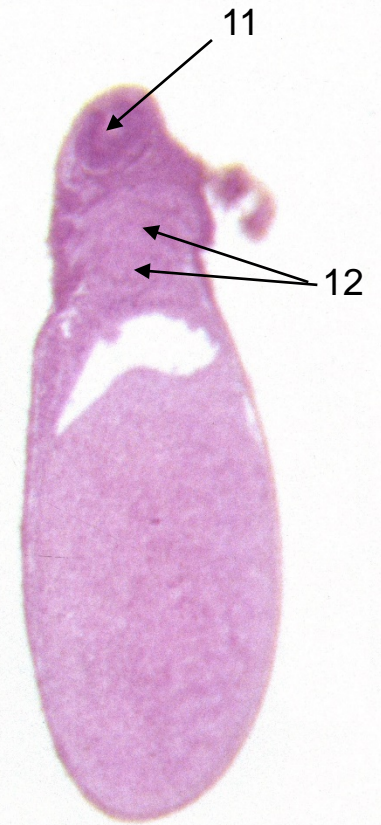
4 A: animale - B: stadio - C: tipo di preparato



D- _____



E- _____



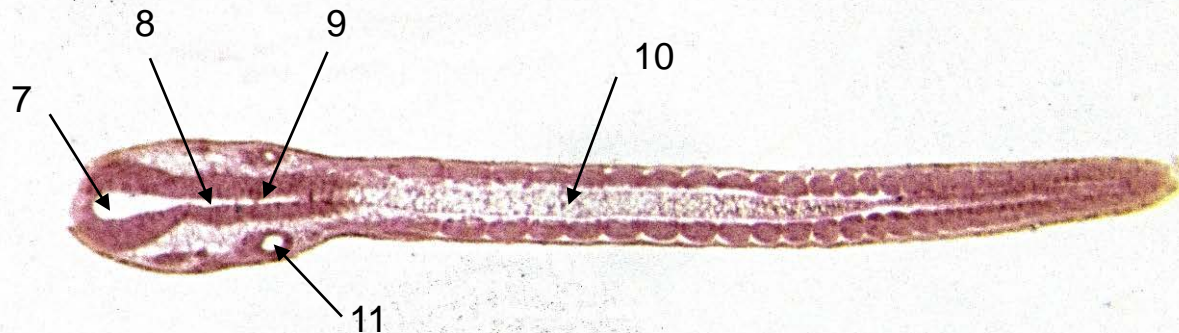
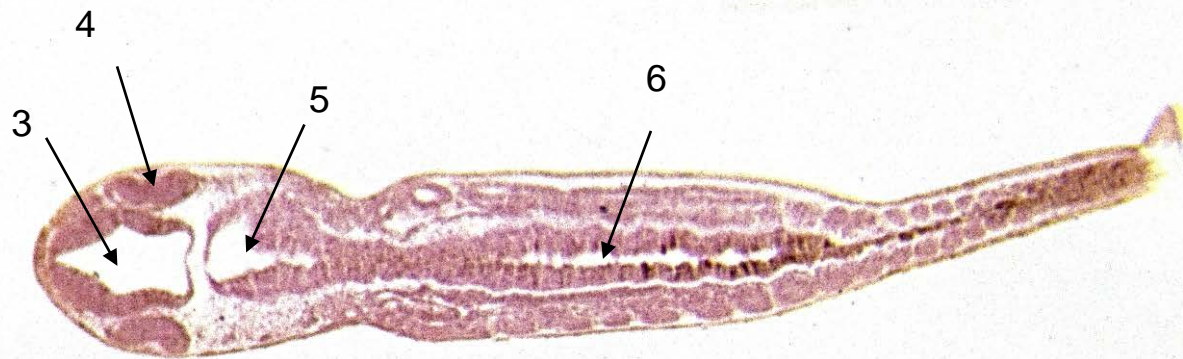
F- _____

5 A: animale - B: stadio - C: tipo di preparato

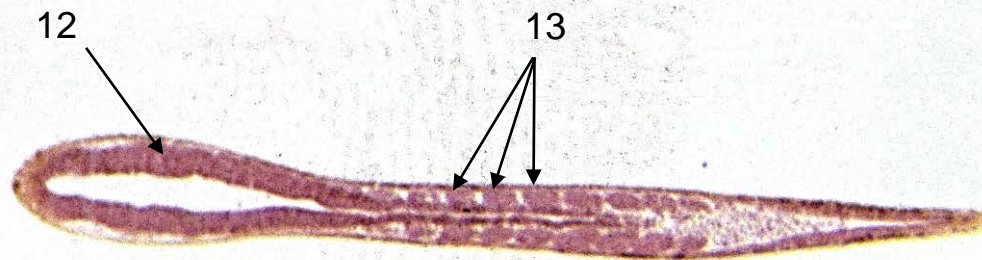


23 A: animale - B: stadio - C: tipo di preparato

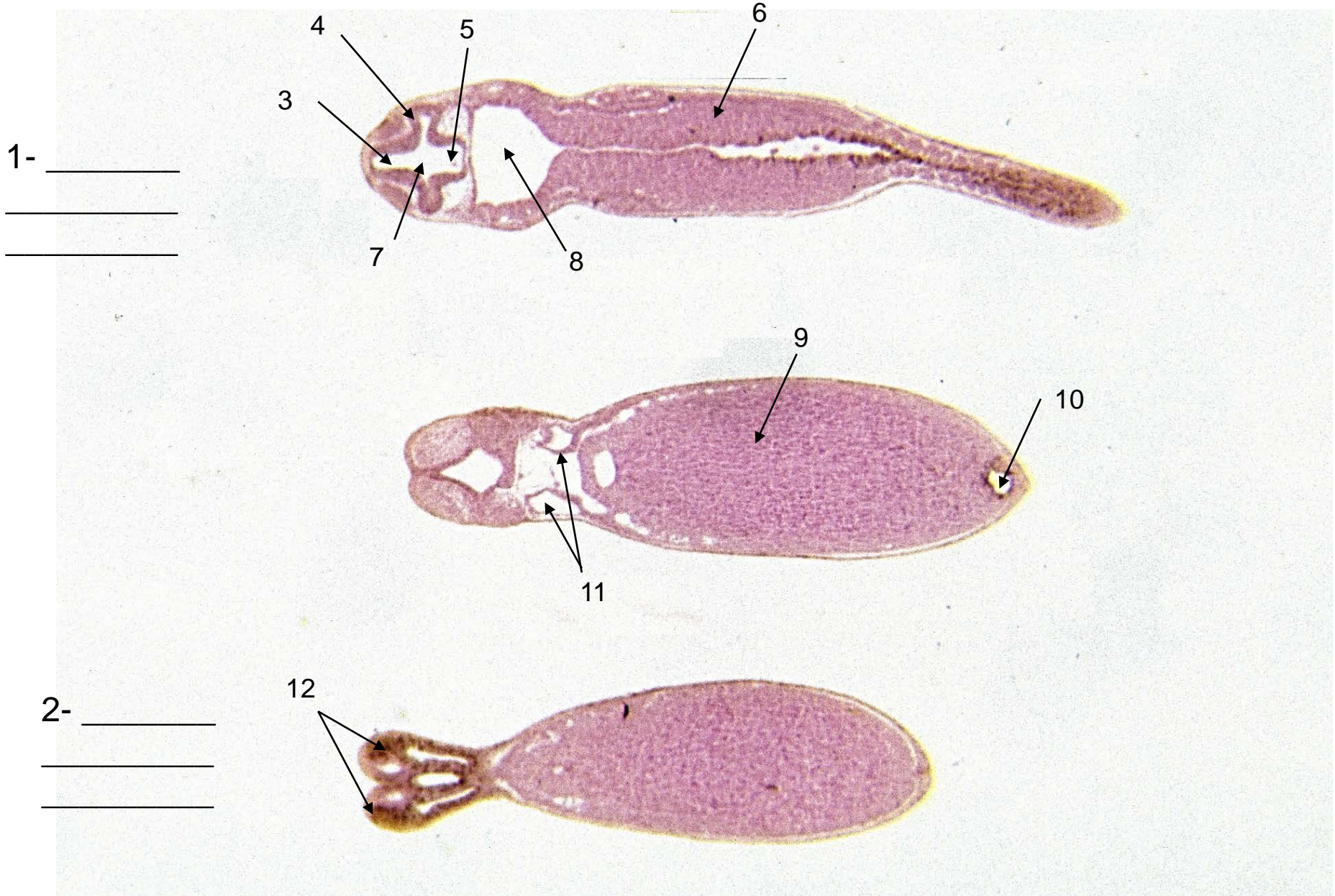
1- _____



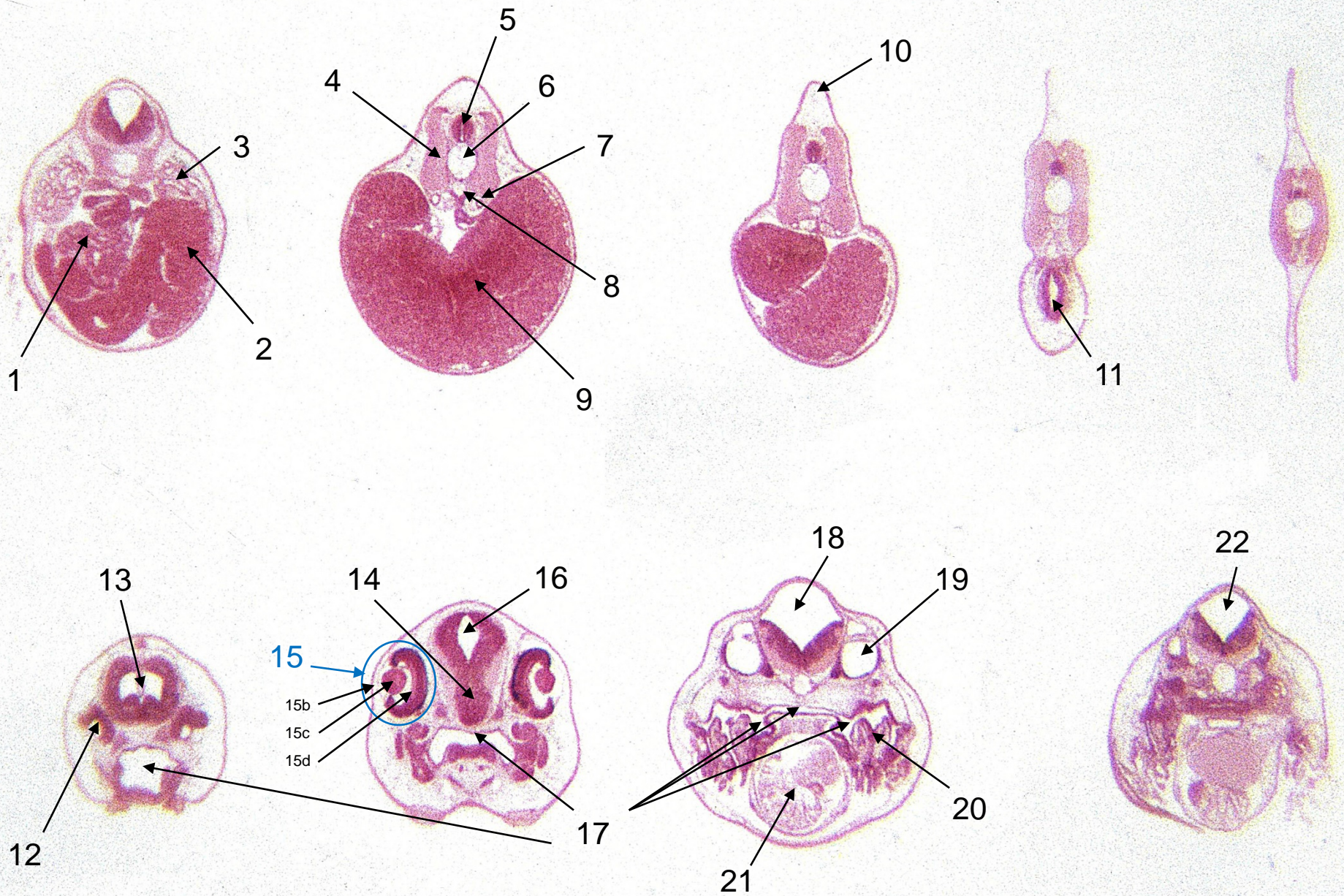
2- _____



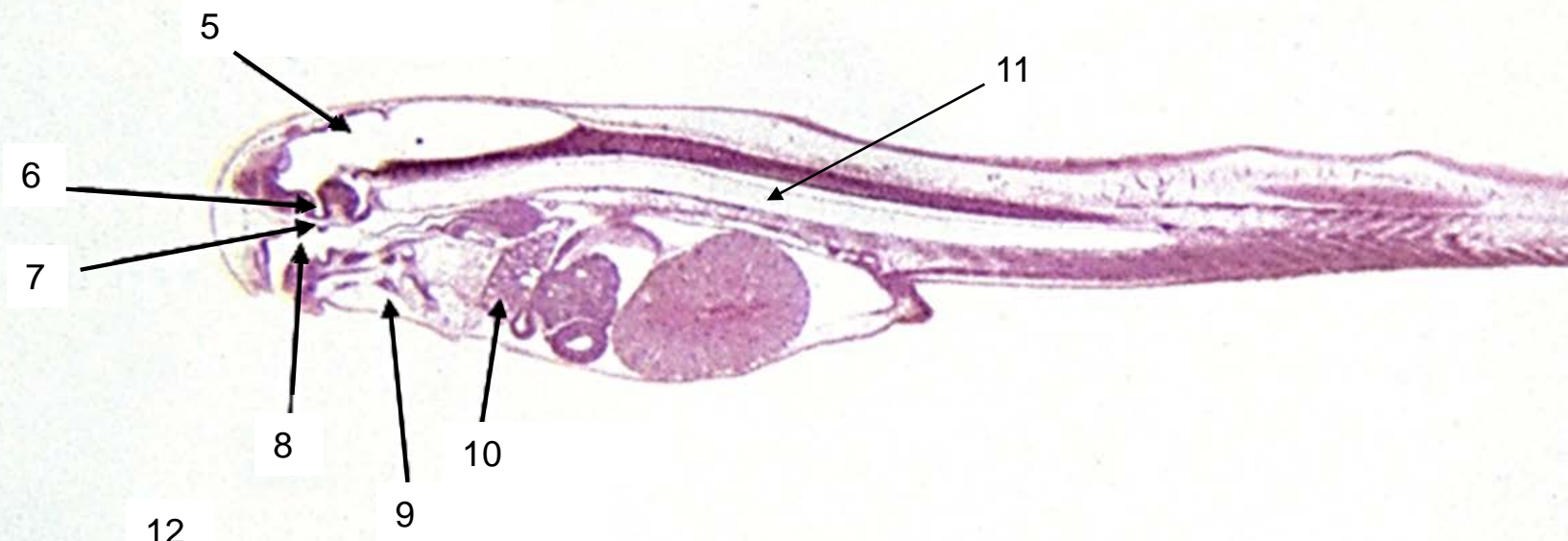
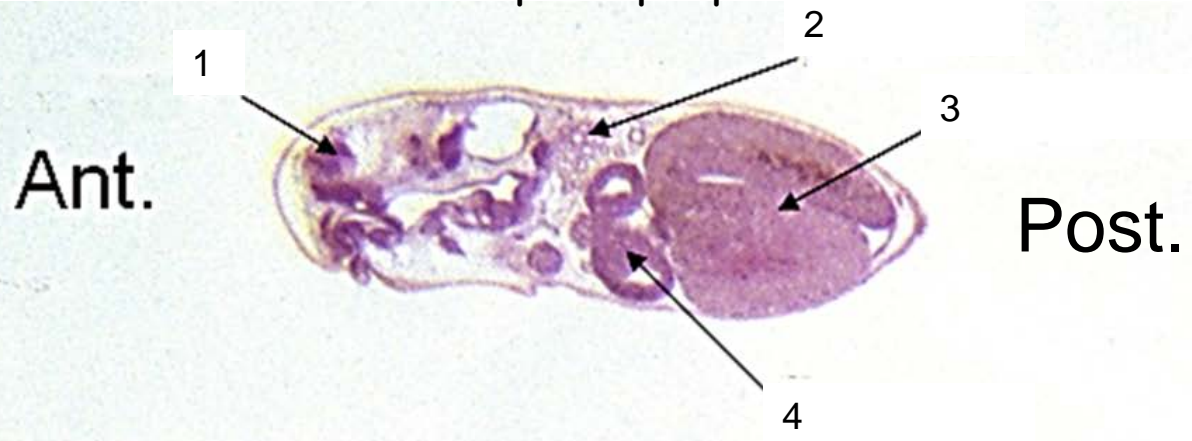
24 A: animale - B: stadio - C: tipo di preparato



6 A: animale - B: stadio - C: tipo di preparato



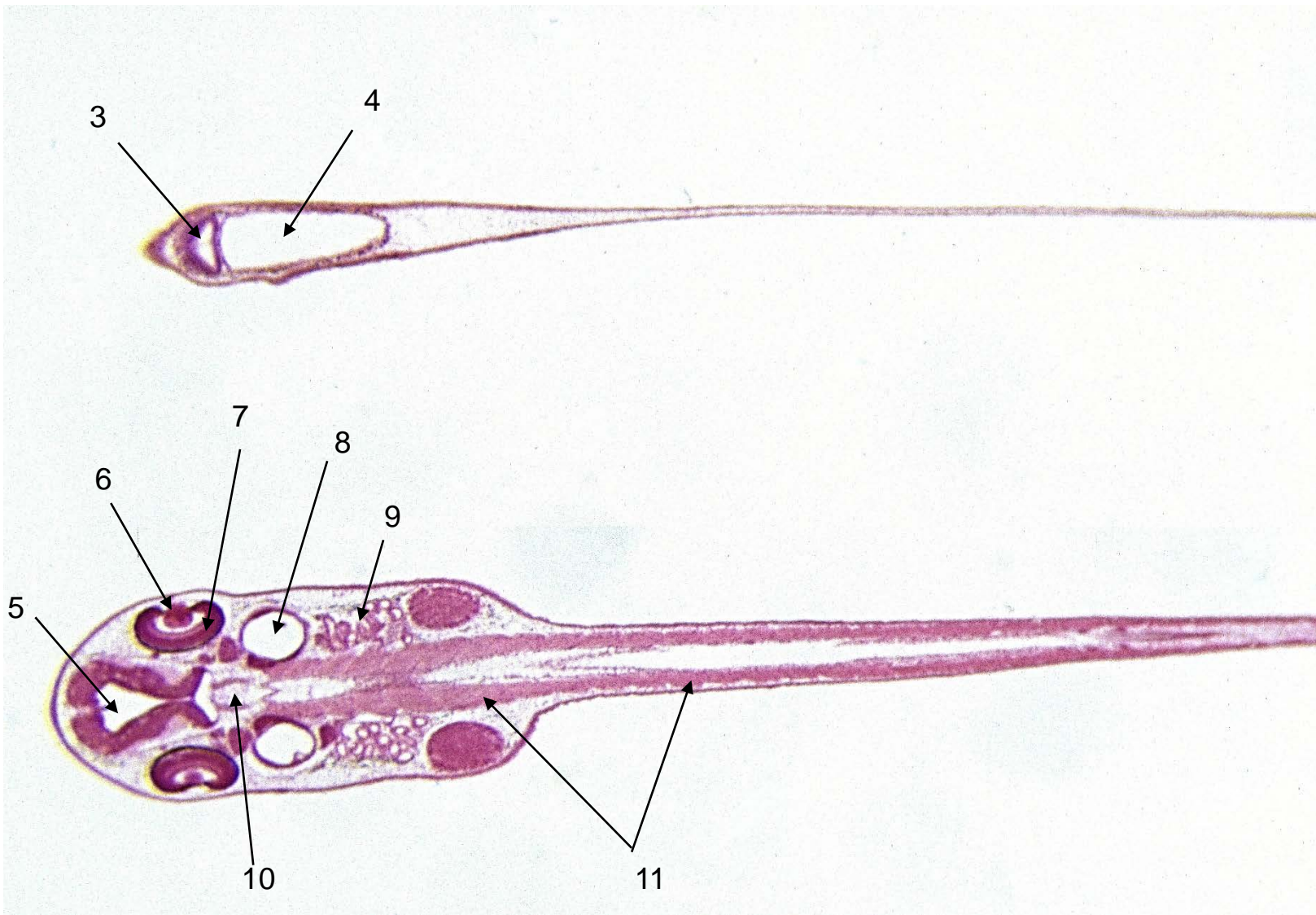
7 A: animale - B: stadio - C: tipo di preparato



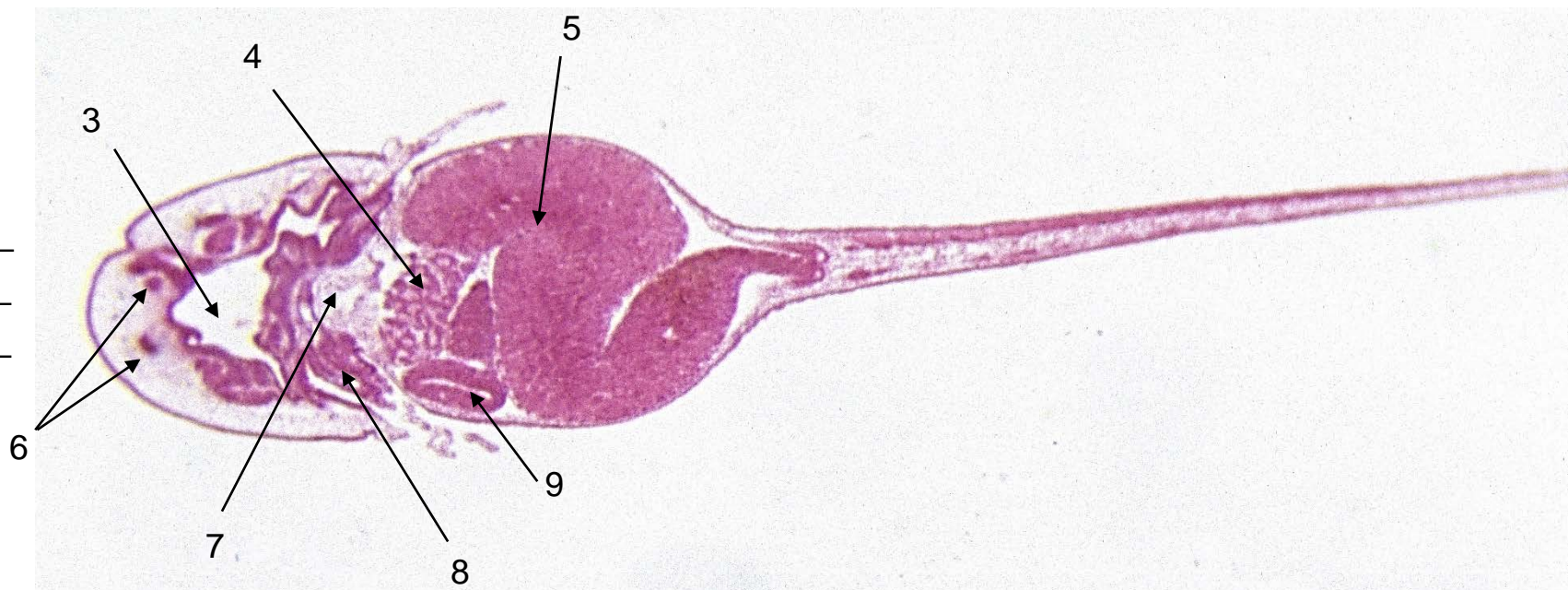
25 A: animale - B: stadio - C: tipo di preparato

1- _____

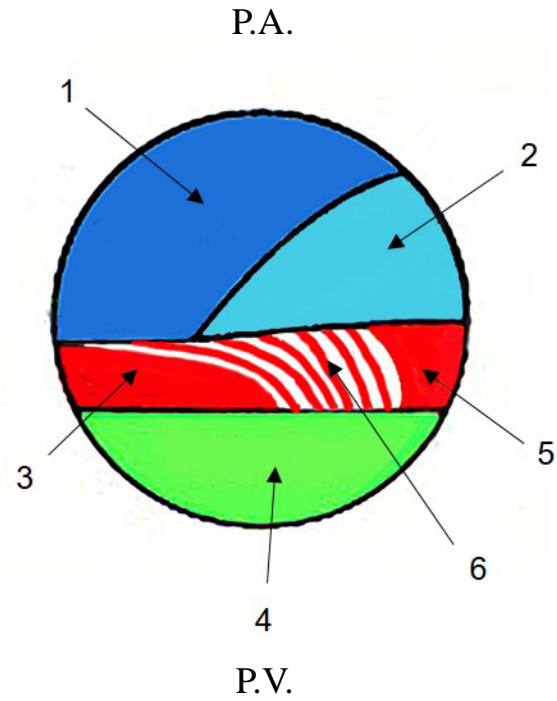
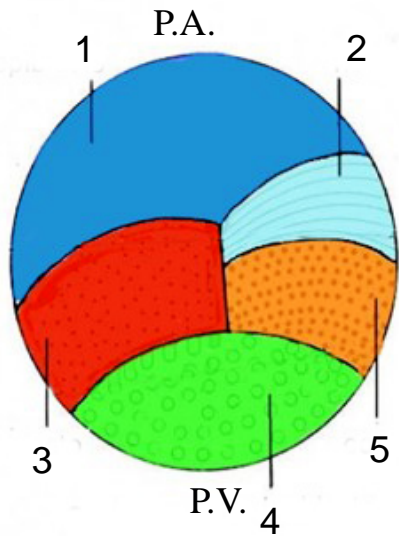
2- _____



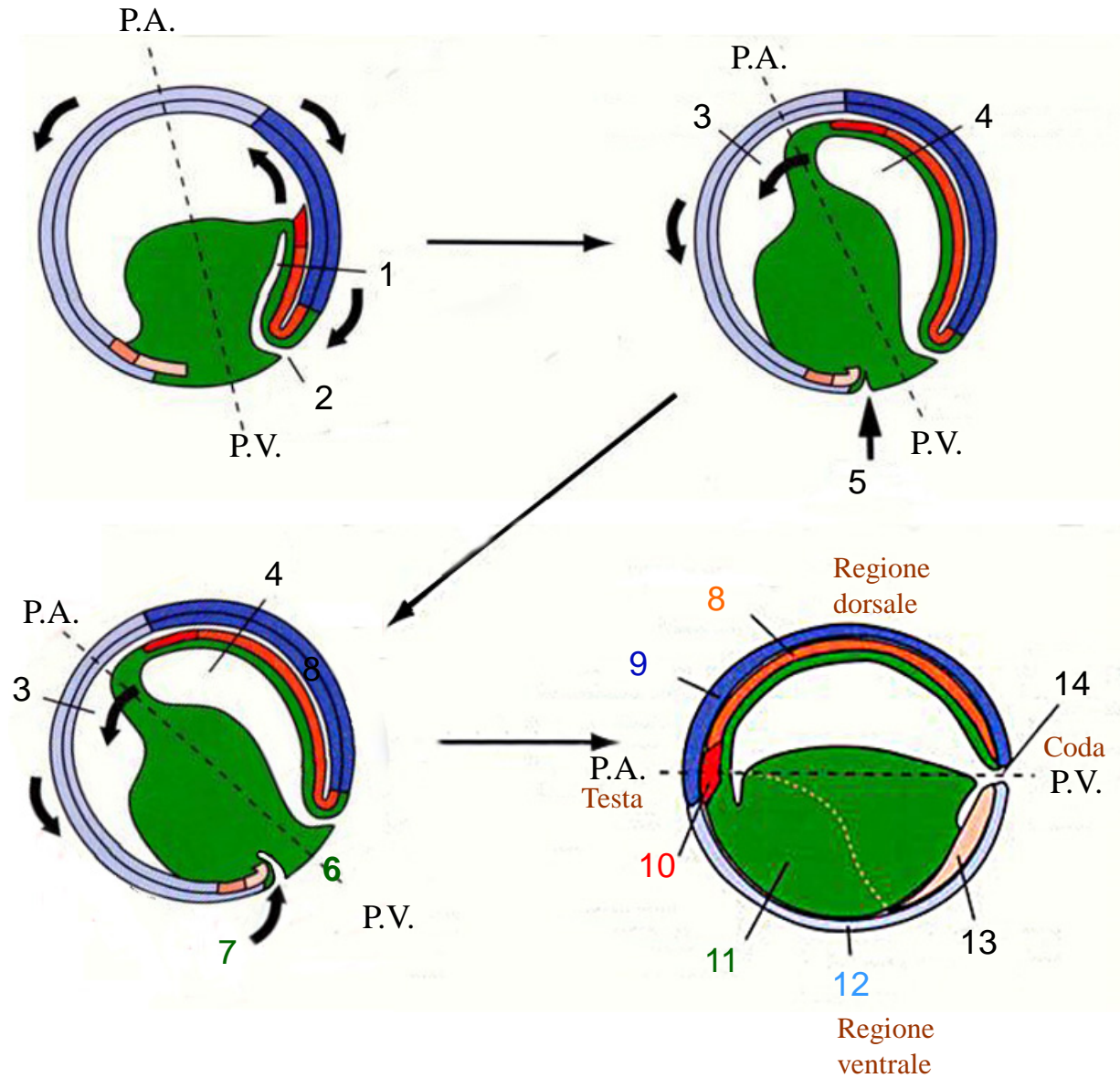
26 A: animale - B: stadio - C: tipo di preparato



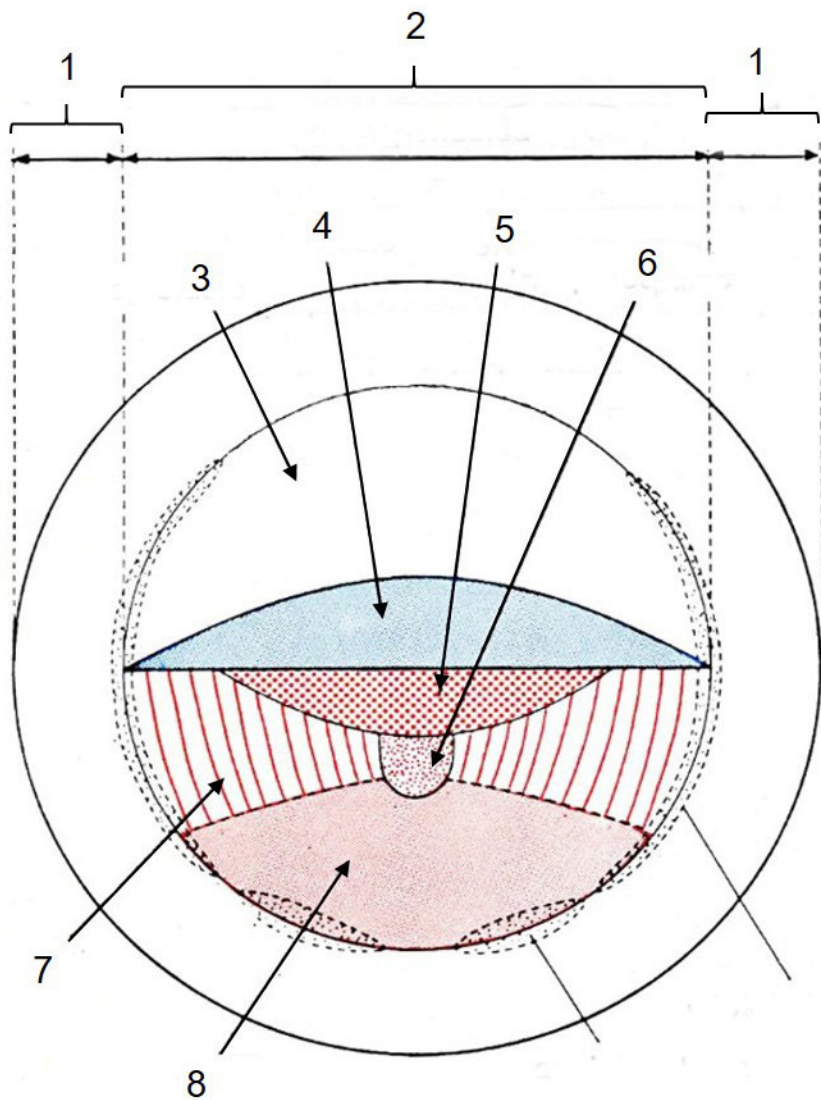
7b A: animale - B: stadio - C: tipo di schema



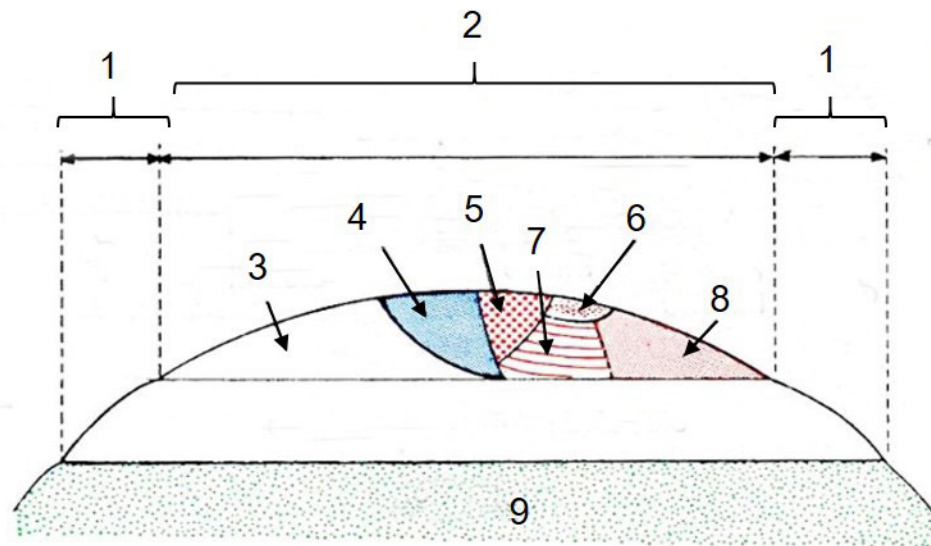
8 A: Classe - B: stadio - C: tipo di schema



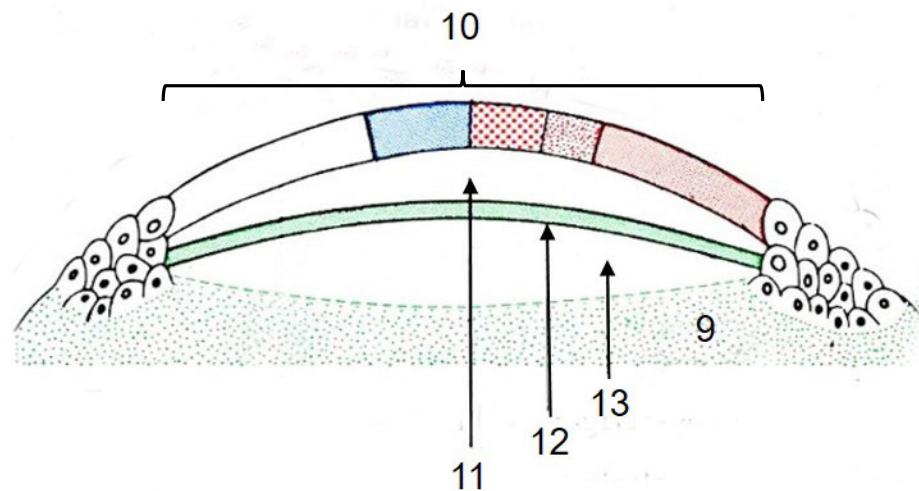
8b A: classe - B: stadio - C: tipo di schema



A. Visione polare



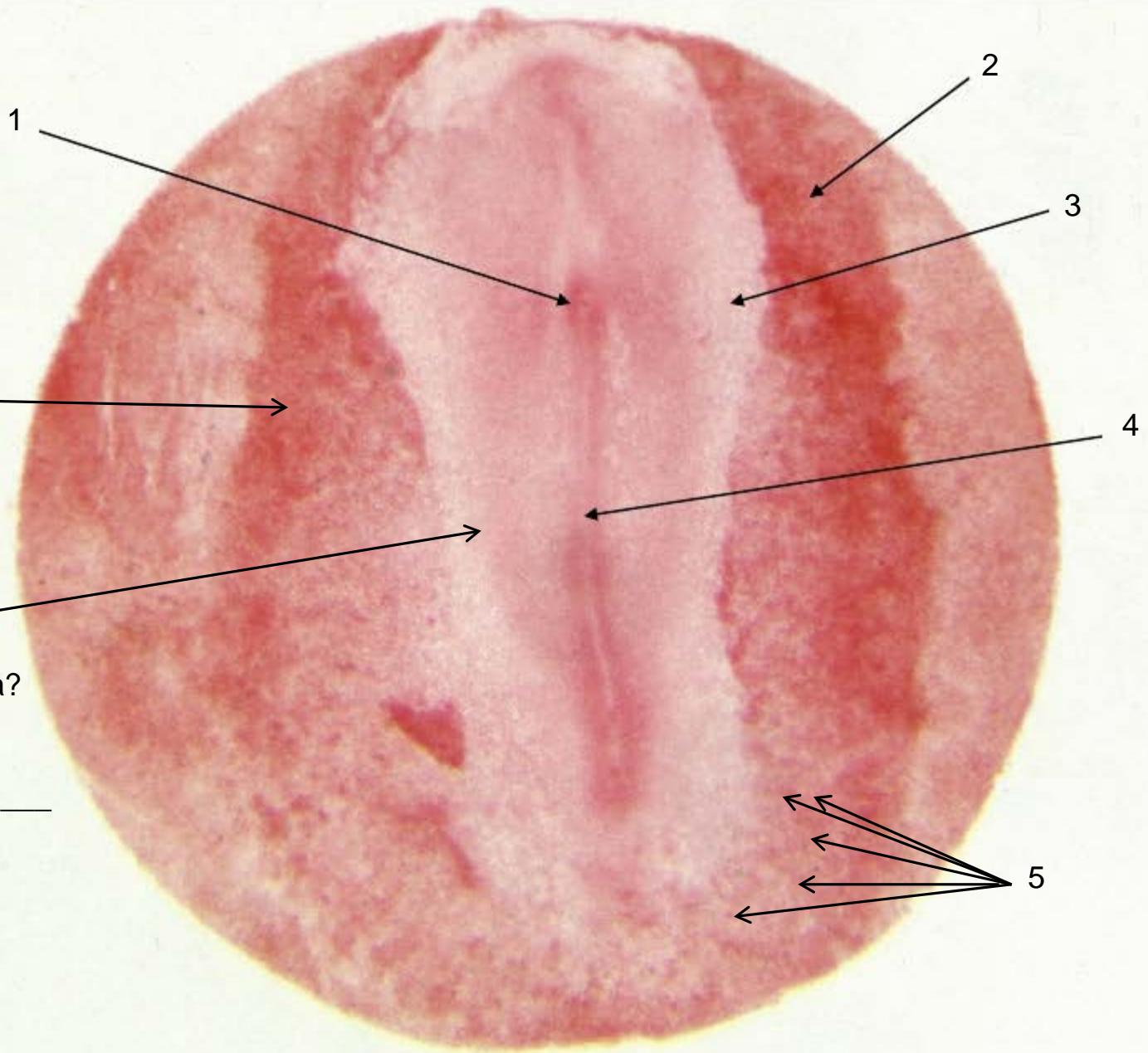
B. Visione laterale



C. Visione laterale in sezione

9

A: animale - B: stadio - C: tipo di preparato



6 SOTTO
alla zona scura
periferica?

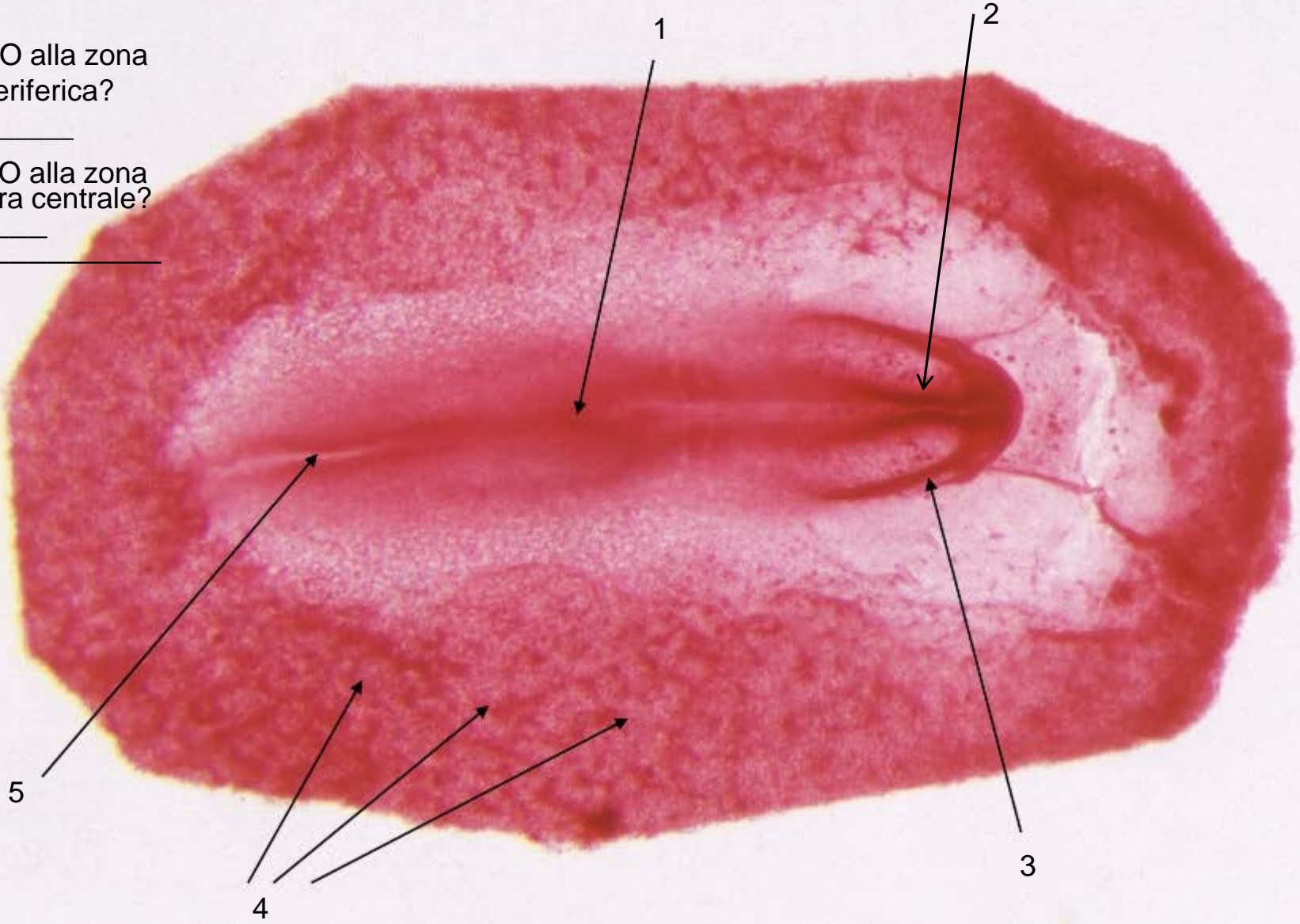
7 SOTTO
all'Area più chiara?

5

10 A: animale - B: stadio - C: tipo di preparato

6 SOTTO alla zona
scura periferica?

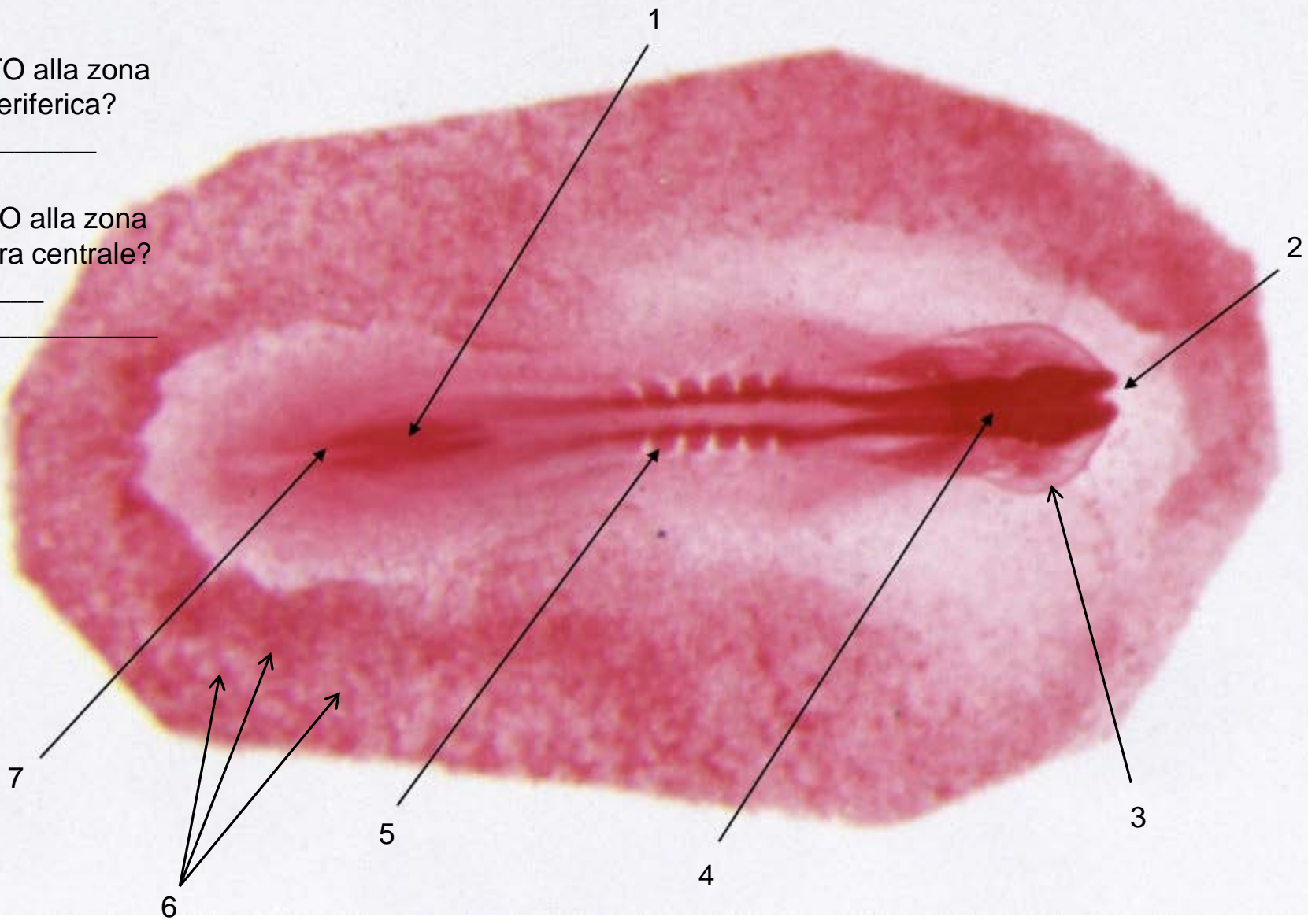
7 SOTTO alla zona
più chiara centrale?



11 A: animale - B: stadio - C: tipo di preparato

8 SOTTO alla zona scura periferica?

9 SOTTO alla zona più chiara centrale?



6

7

5

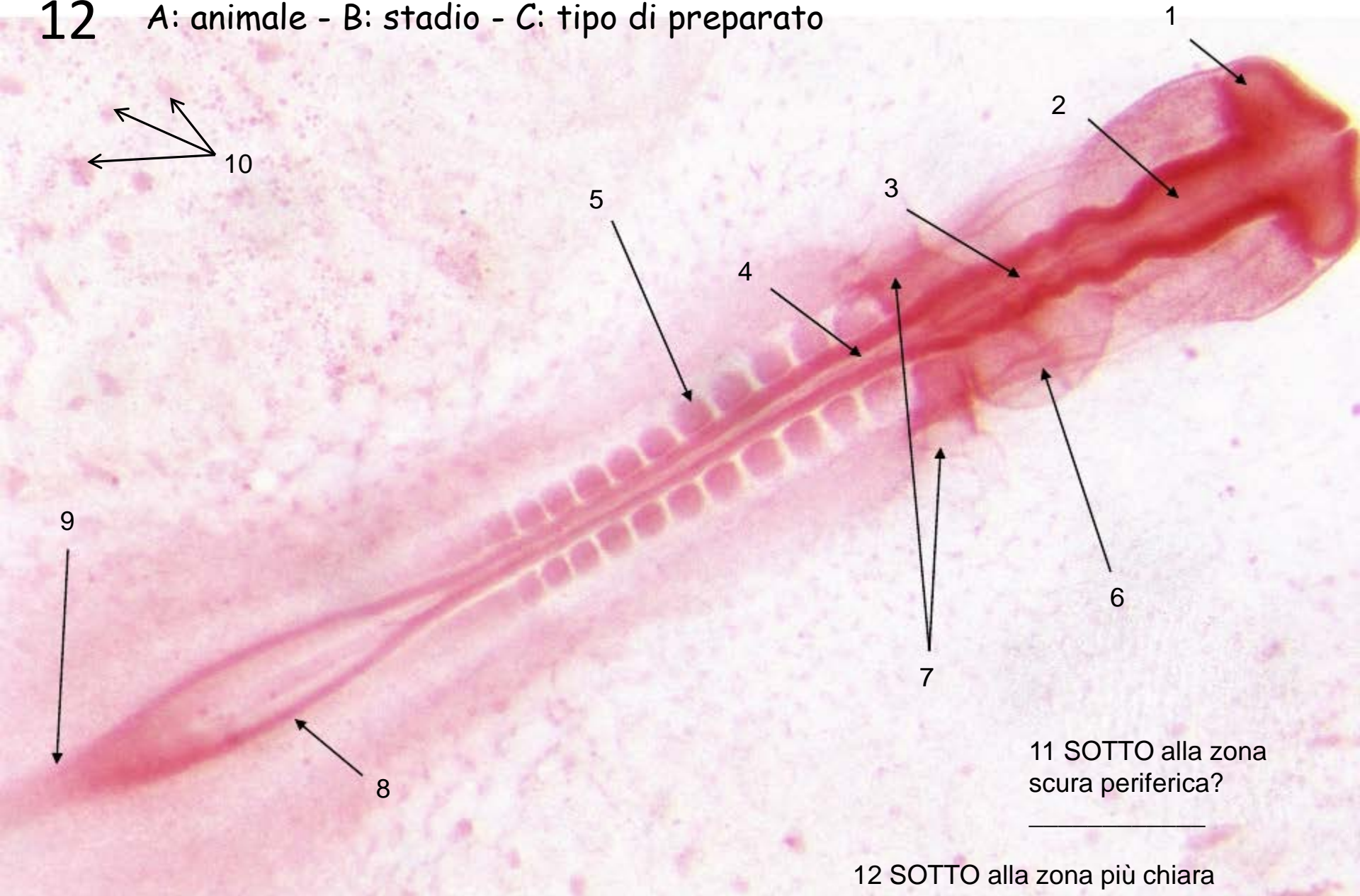
4

3

1

2

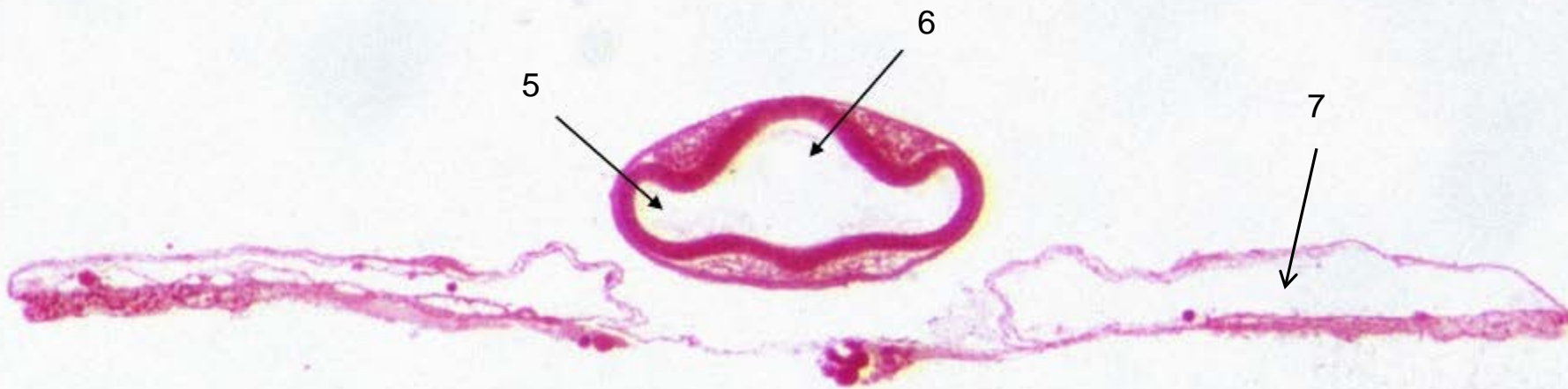
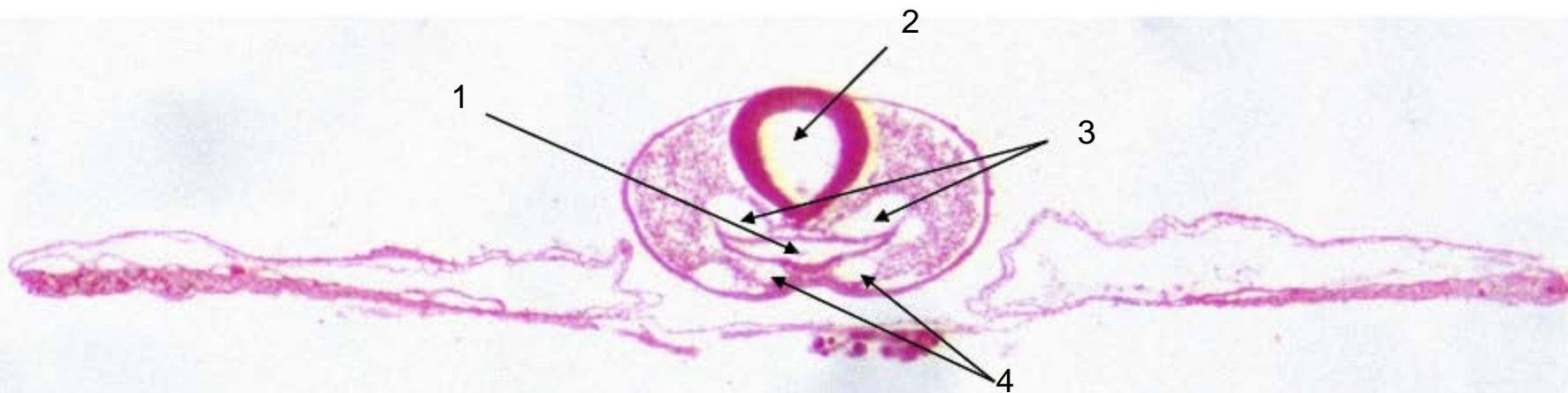
12 A: animale - B: stadio - C: tipo di preparato



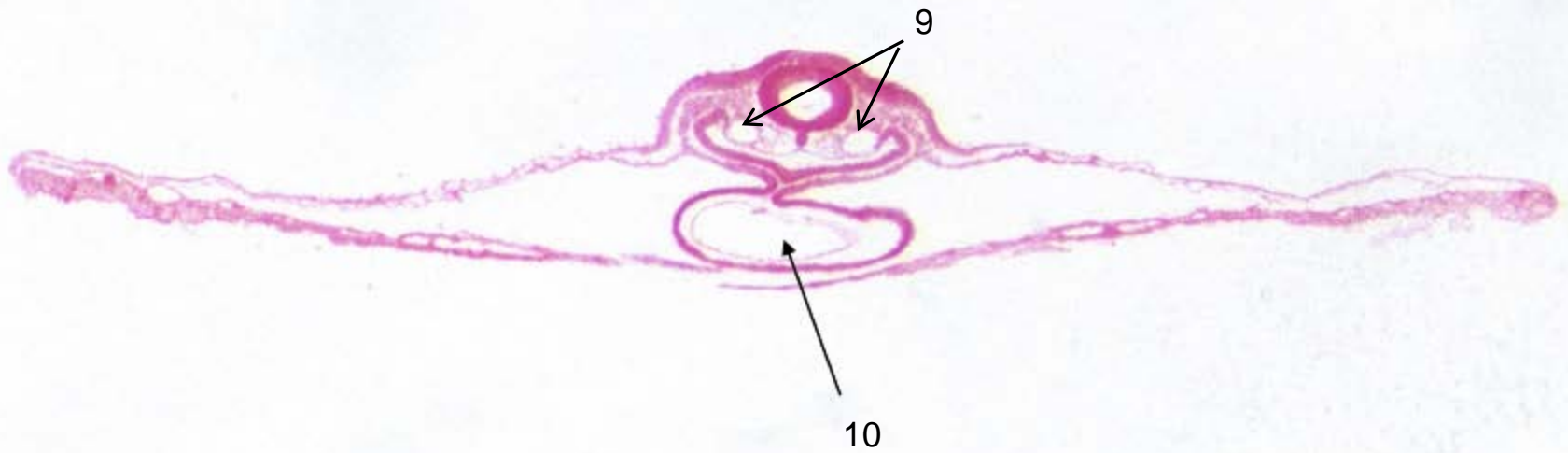
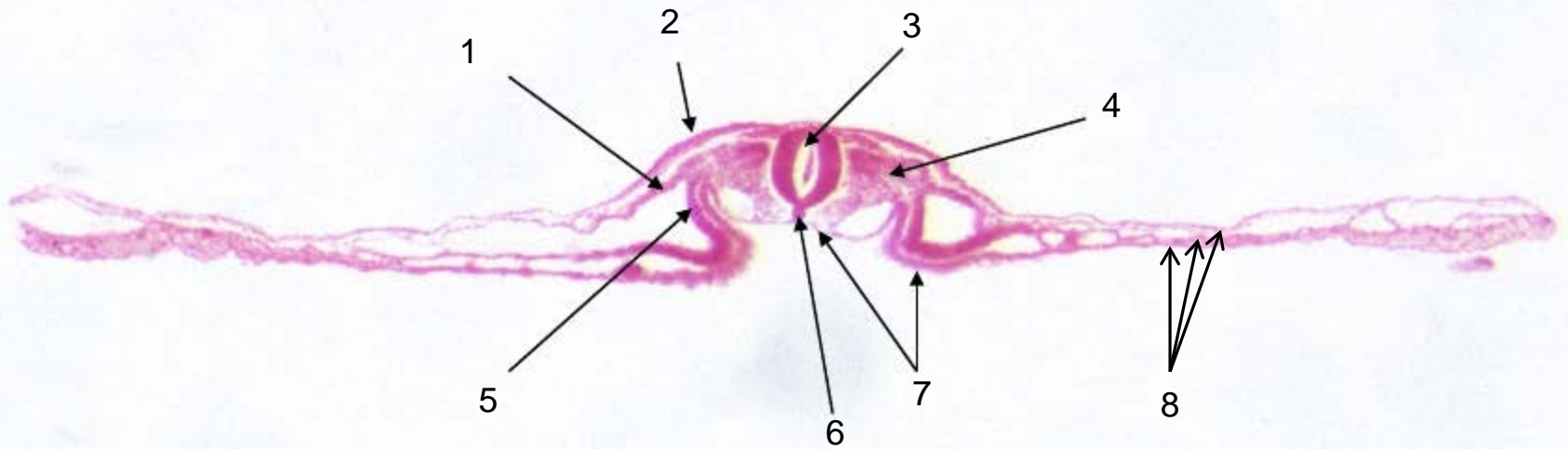
11 SOTTO alla zona
scura periferica?

12 SOTTO alla zona più chiara
centrale?

14 A: animale - B: stadio - C: tipo di preparato



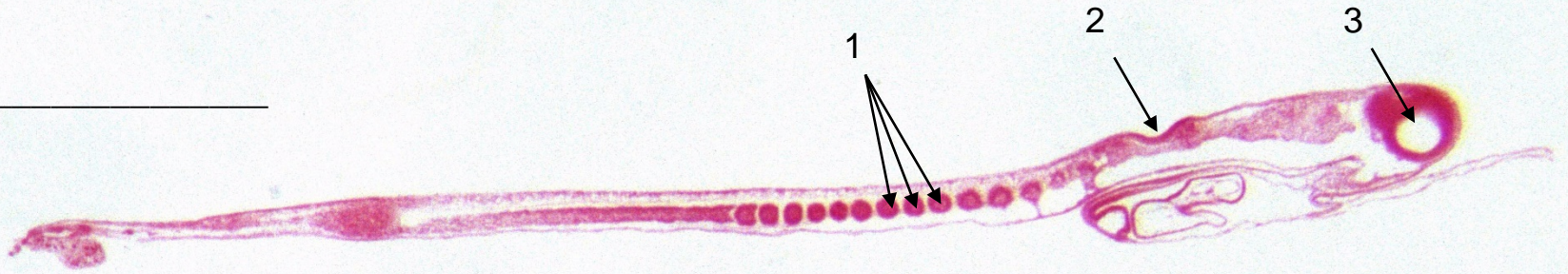
15 A: animale - B: stadio - C: tipo di preparato



16

A: animale - B: stadio - C: tipo di preparato

D- _____



E- _____

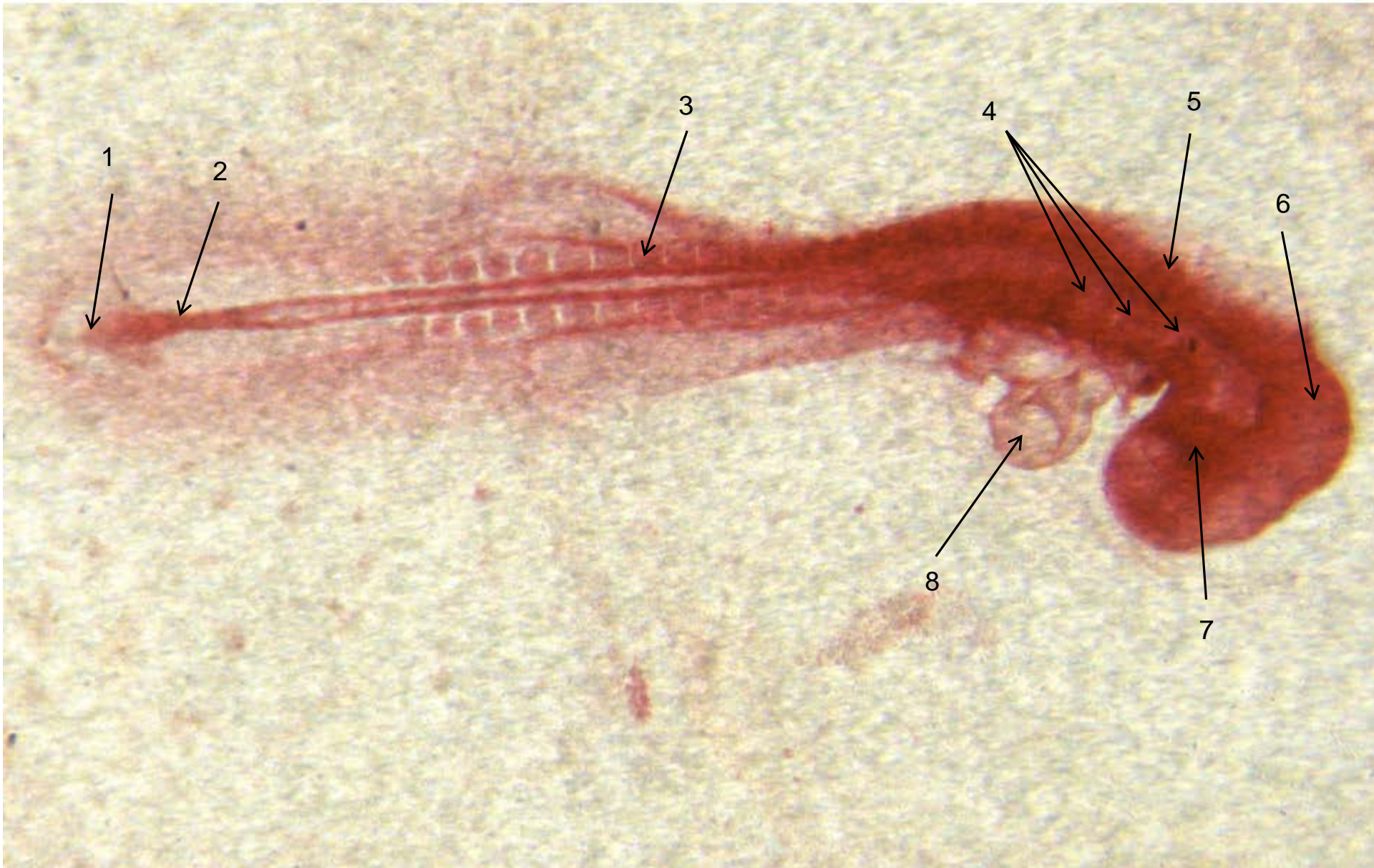


F- _____



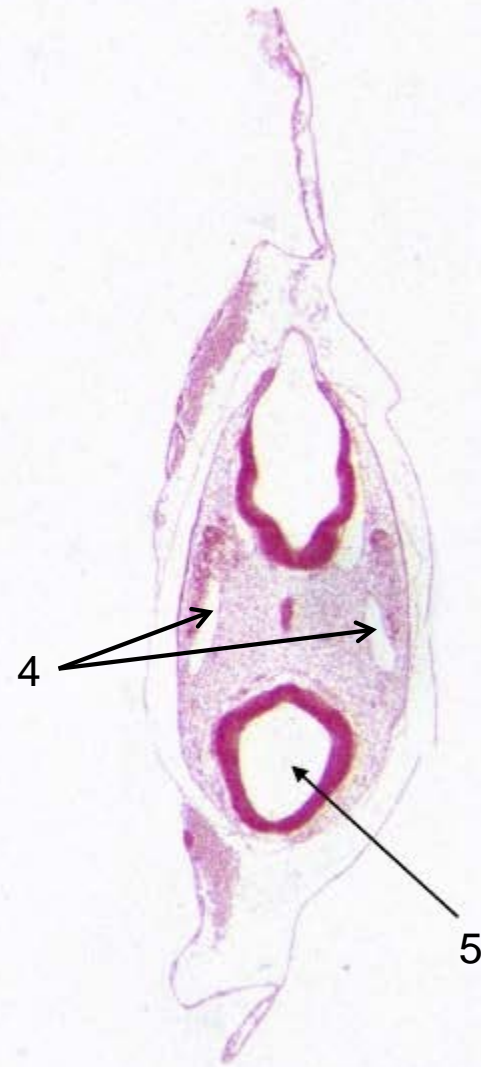
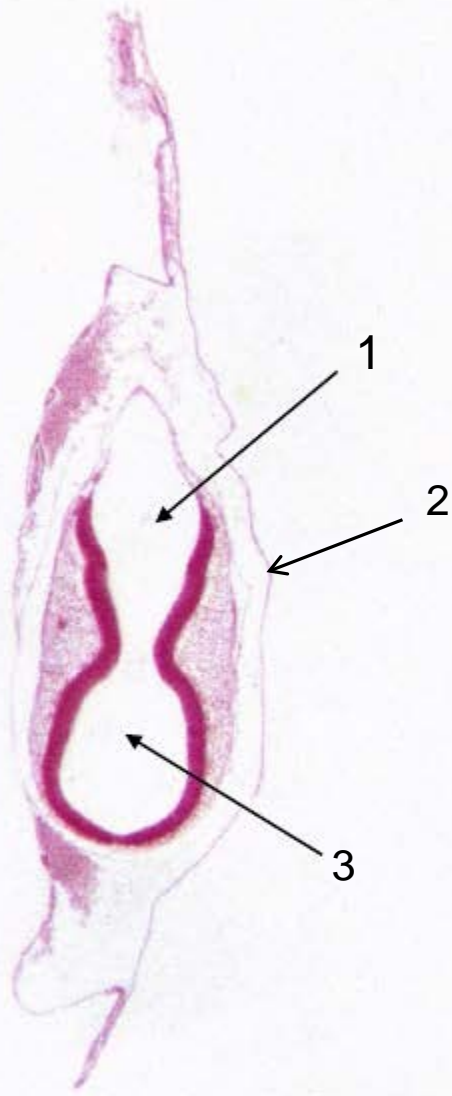
17

A: animale - B: stadio - C: tipo di preparato



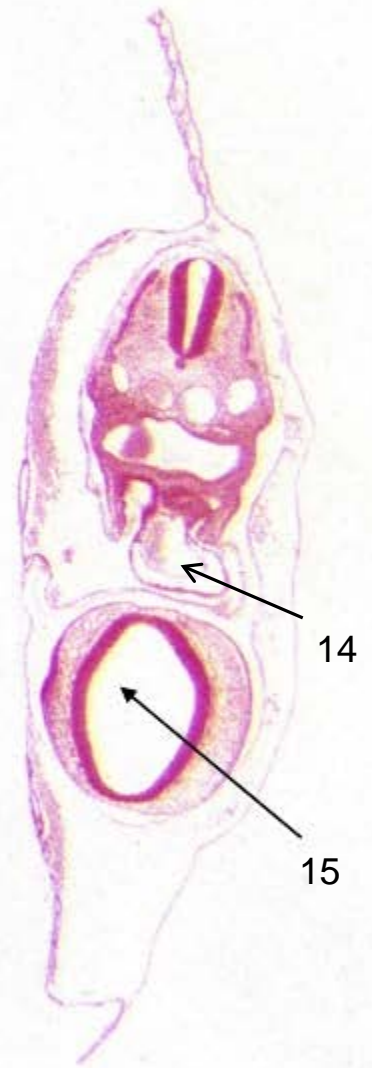
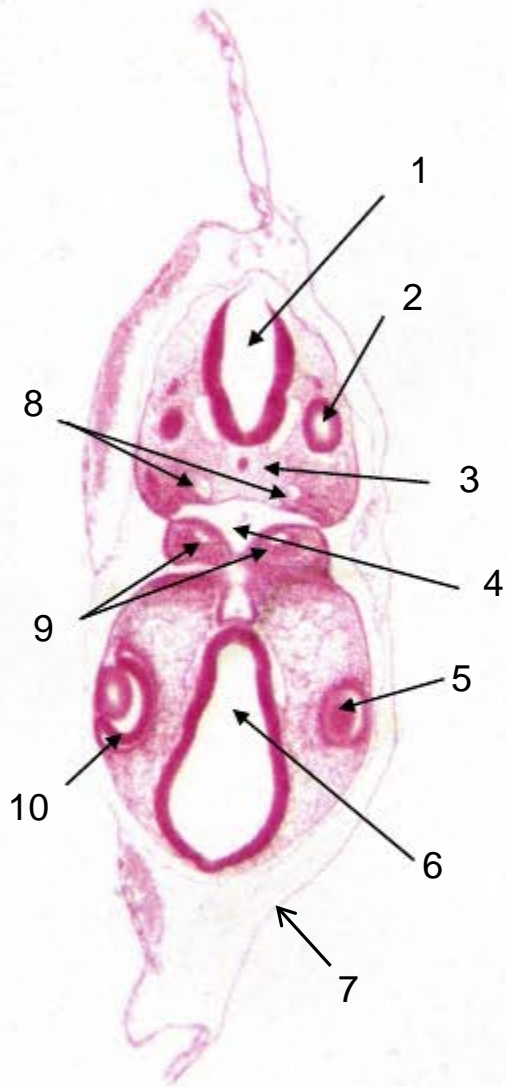
18

A: animale - B: stadio - C: tipo di preparato

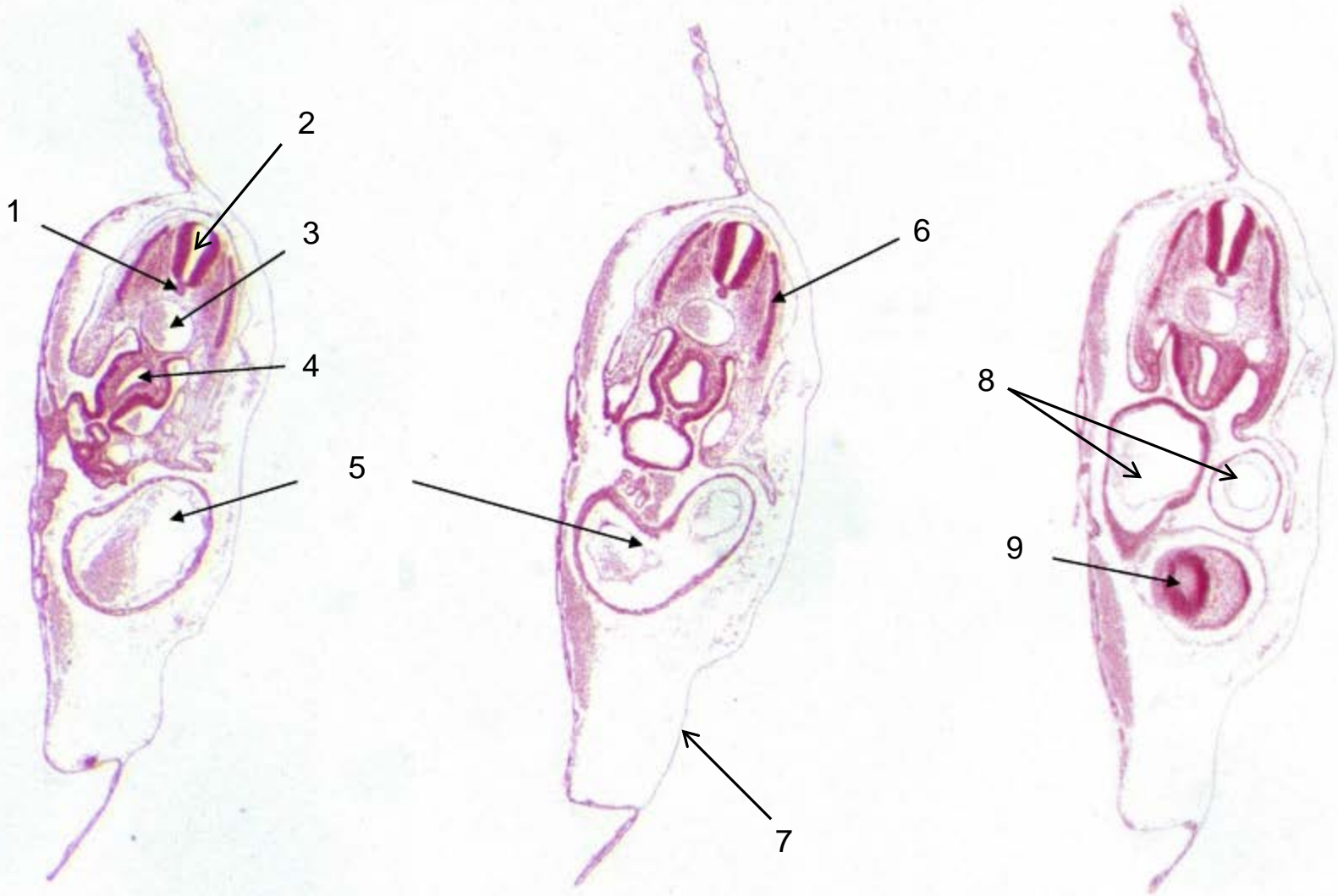


19

A: animale - B: stadio - C: tipo di preparato

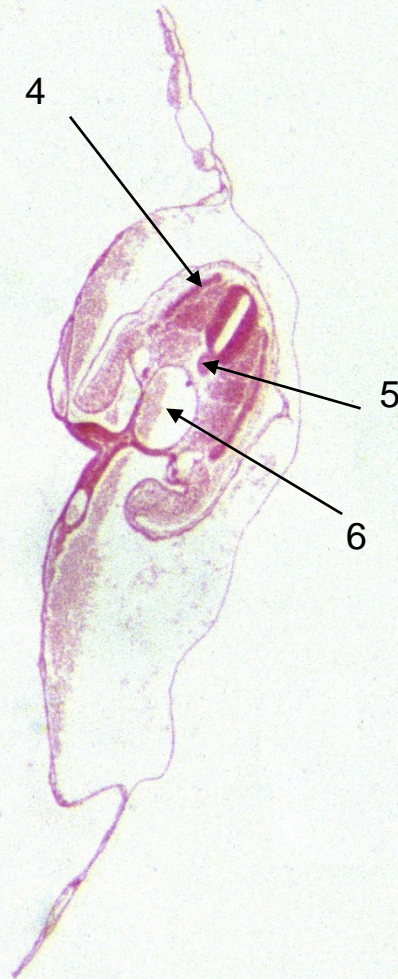
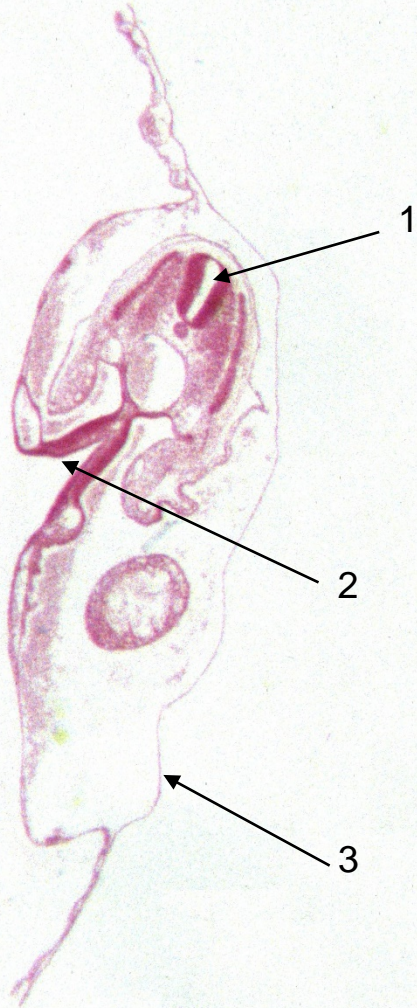


20 A: animale - B: stadio - C: tipo di preparato



21

A: animale - B: stadio - C: tipo di preparato



22

A: animale - B: stadio - C: tipo di preparato

D- _____



E- _____

