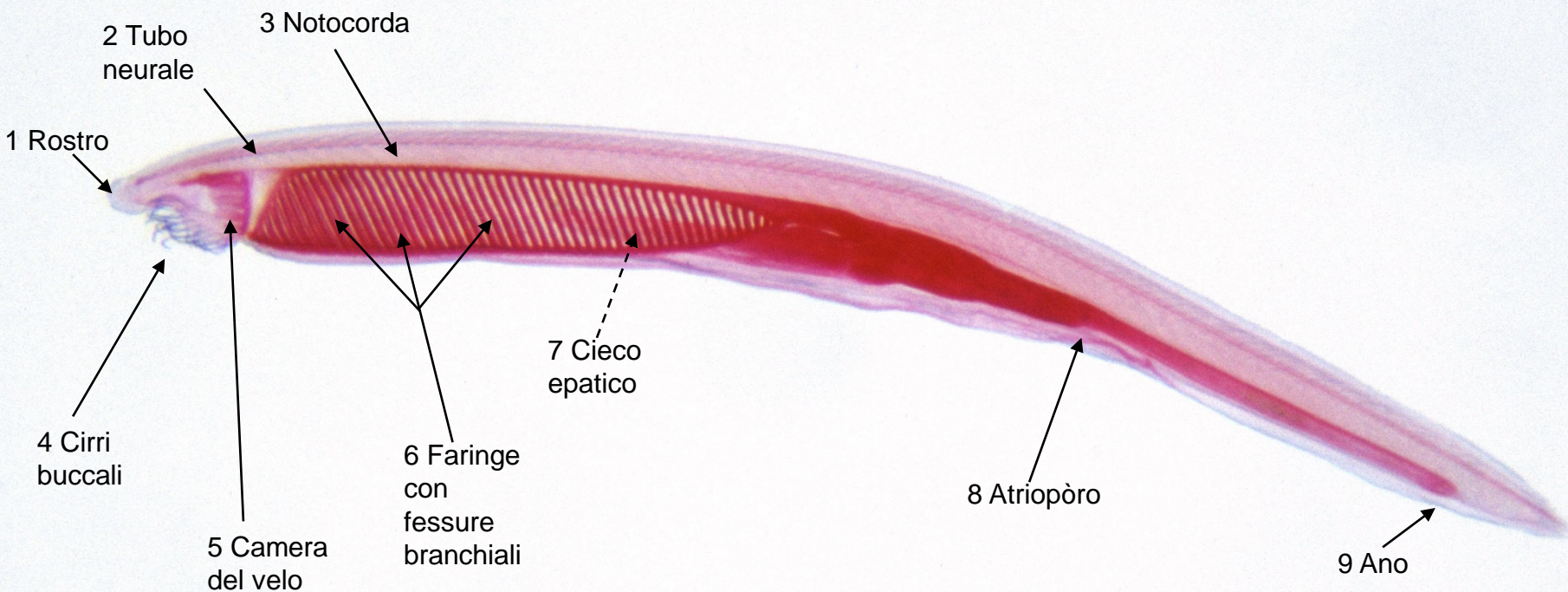
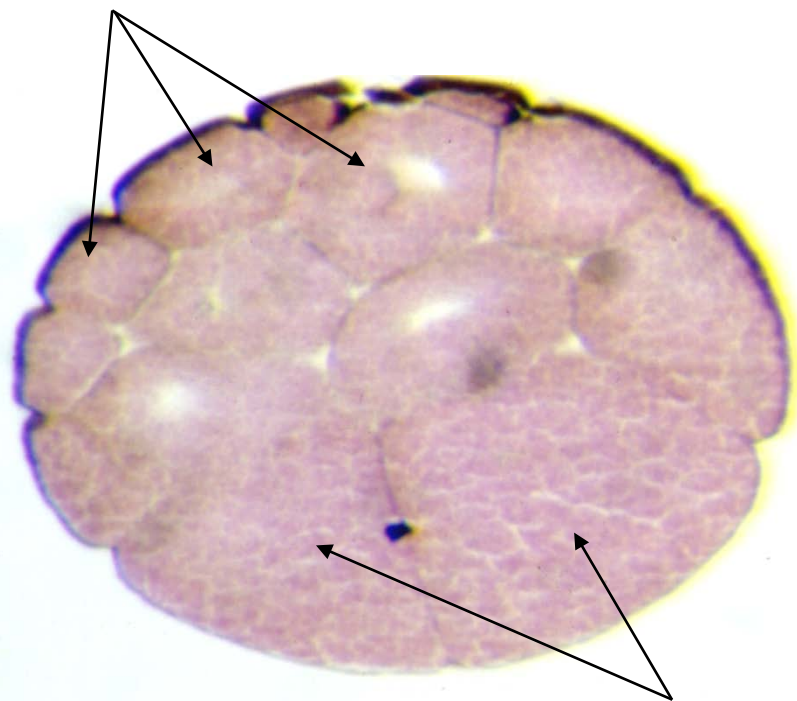


1 A: Anfiosso - B: giovane adulto - C: preparato "in toto"



2 A: Rana - B: Morula e blastula - C: sez. sagittali

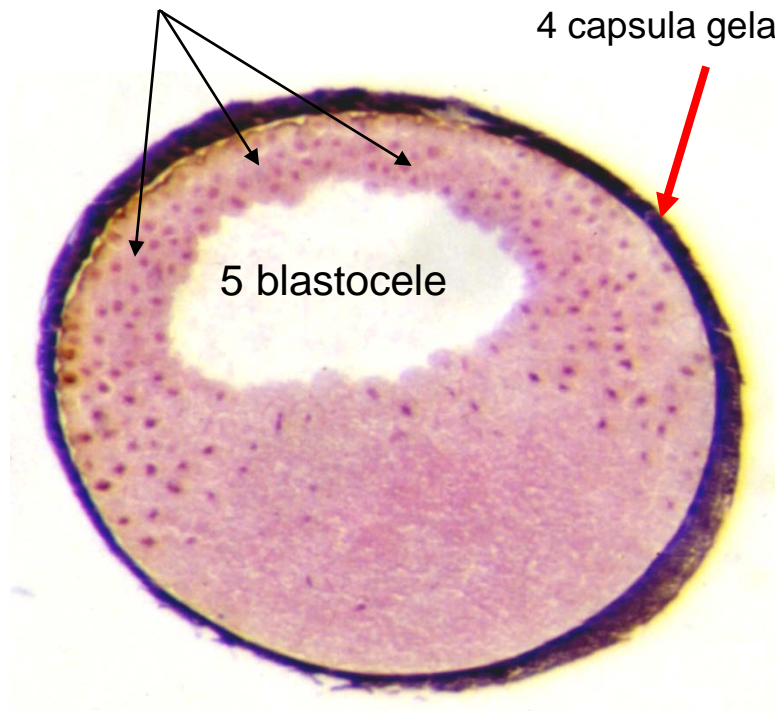
1 micromeri



2 macromeri

Morula

3 nuclei dei micromeri



4 capsula gelatinosa

5 blastocele

Blastula

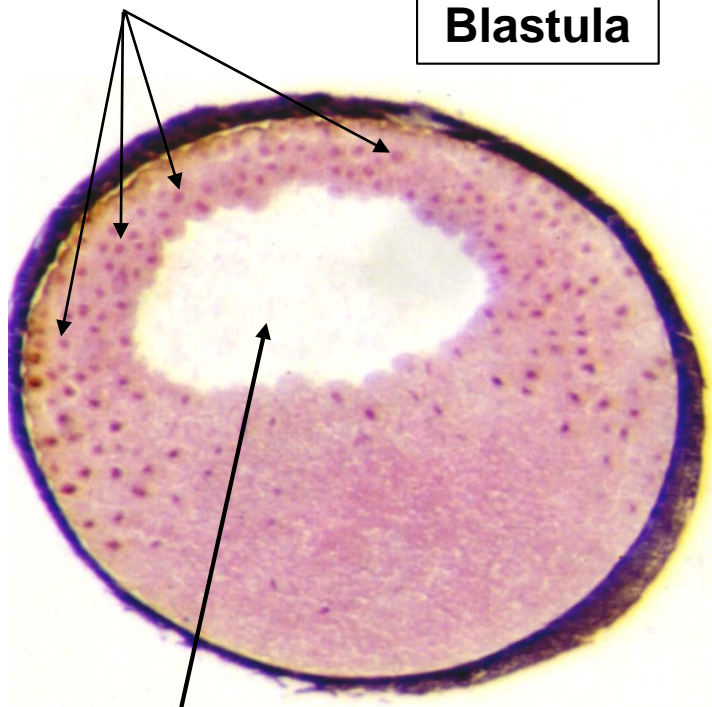
3

A: Rana - B: inizio Gastrulazione (comparsa solco Rusconi e Labbro dorsale blastoporo)

- C: Sezioni sagittali

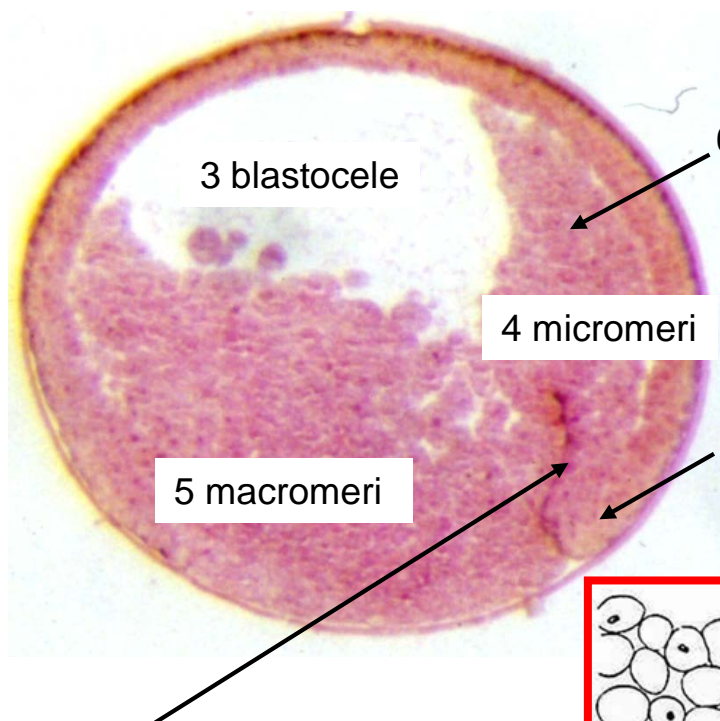
1 Nuclei dei
Micromeri

Blastula



2 blastocele

Gastrula



3 blastocele

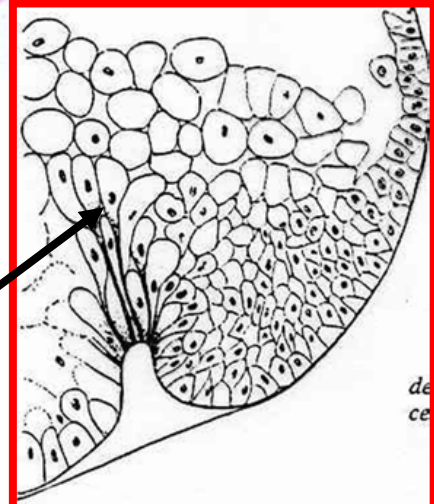
6 mesoderma

4 micromeri

5 macromeri

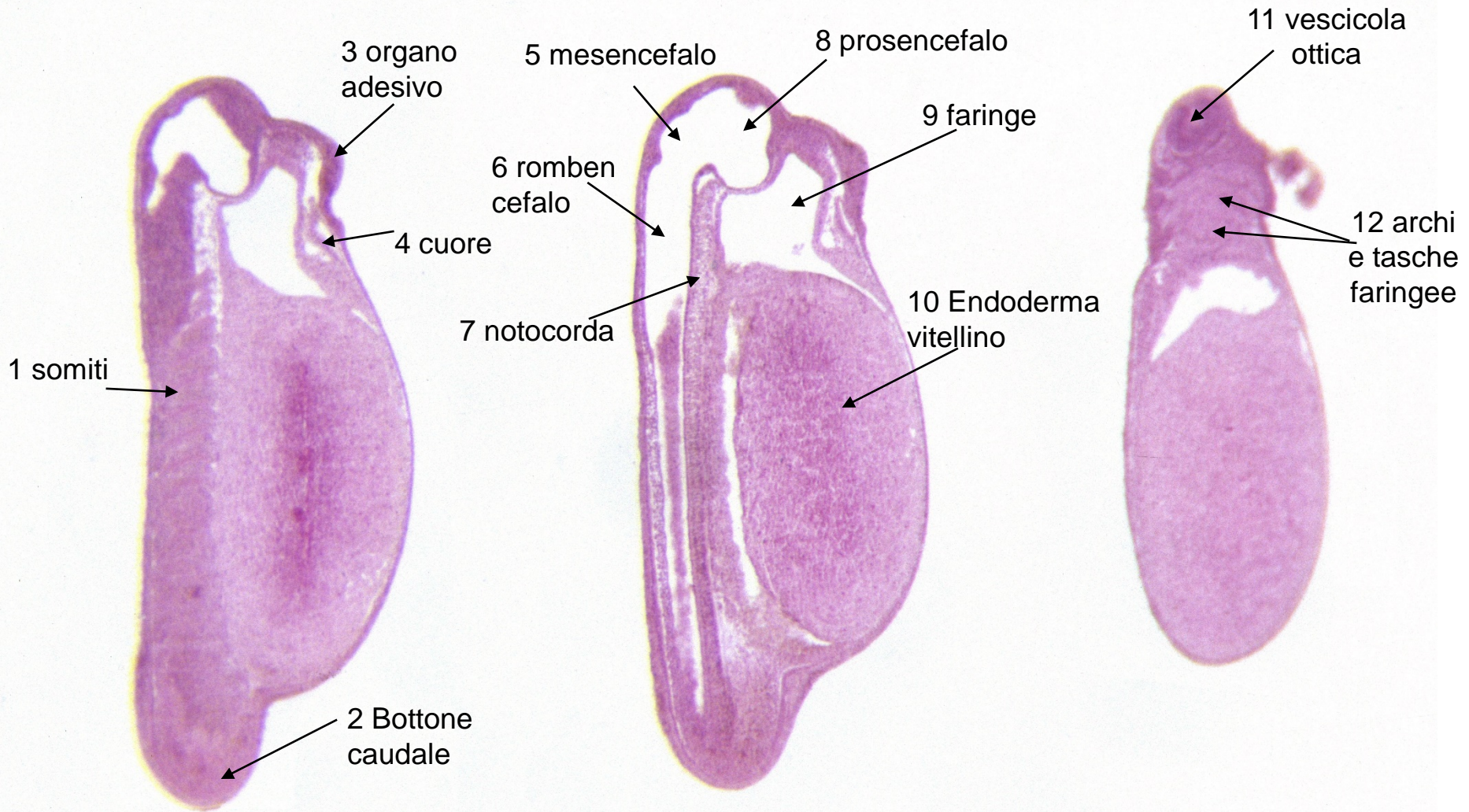
7 Labbro dors.
blastoporo

8 solco di Rusconi



9 Cellule "a bottiglia"

4 A: Rana - B: 4mm (bottone caudale) - C: sez. sagittali



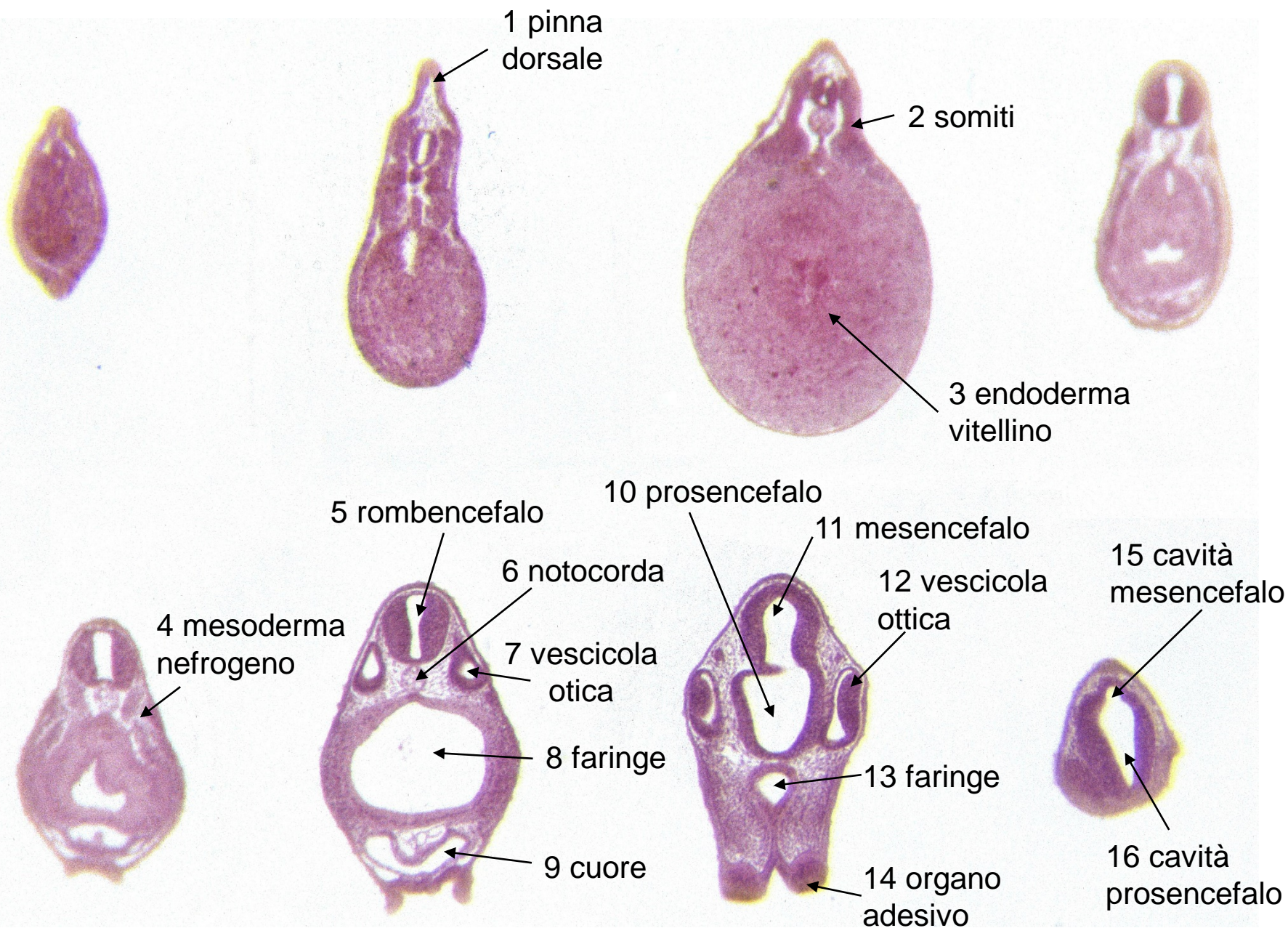
D: Sez. sagittale paramediana

E: Sez. sagittale mediana

F: Sez. sagittale più esterna

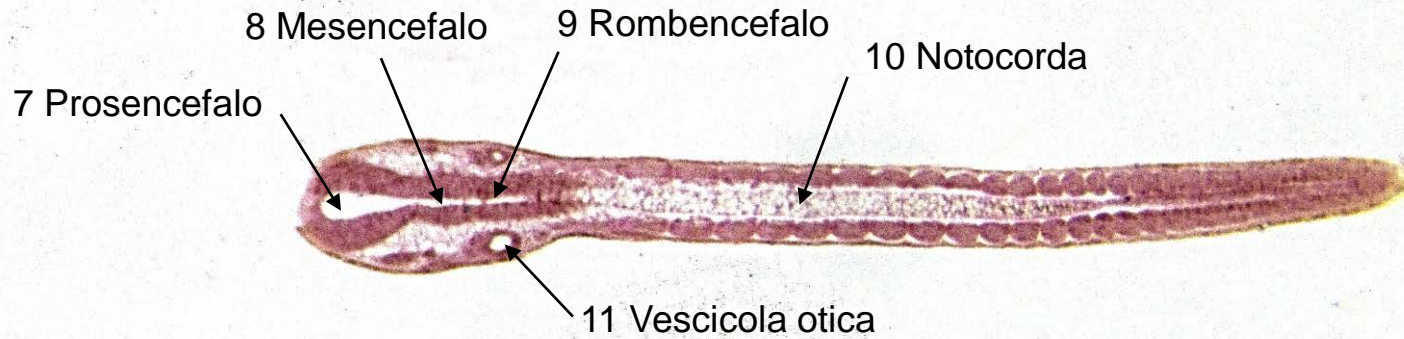
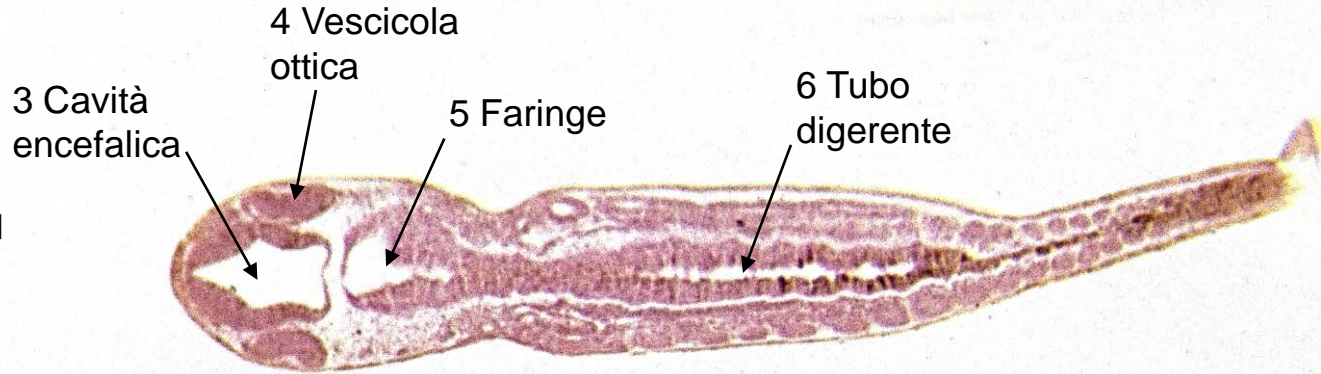
5

A: Rana - B: 4mm - C: sez. trasversali

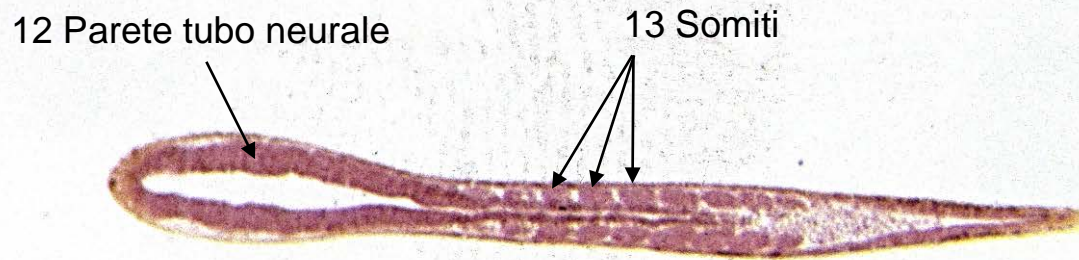


23 Rana - 4 mm - Sez. Frontali (più dorsali)

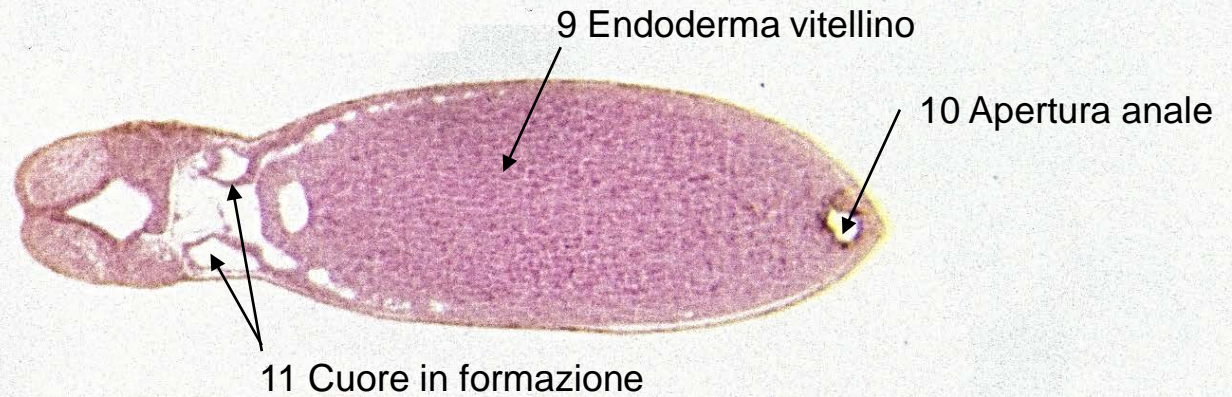
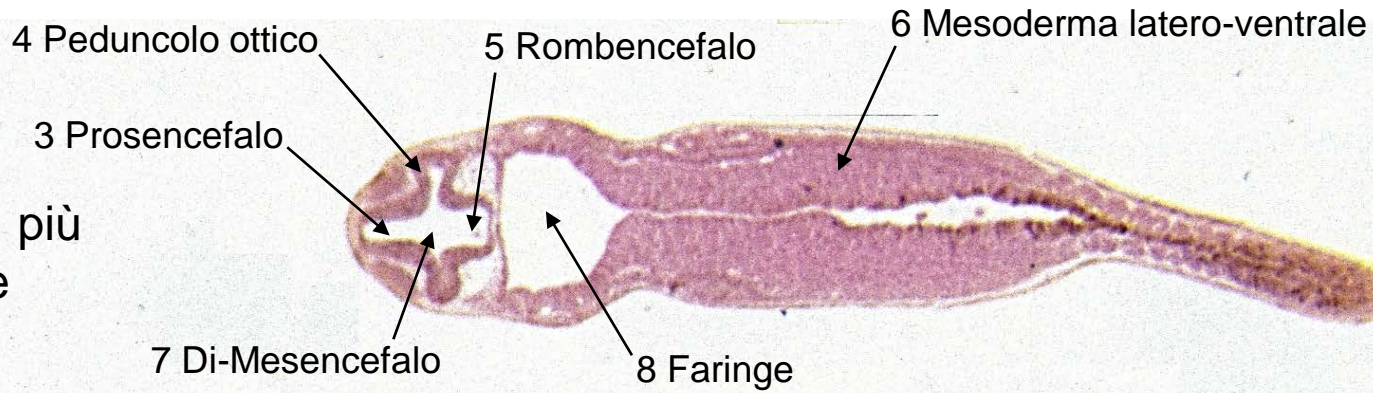
1- Sez. più ventrale delle 3



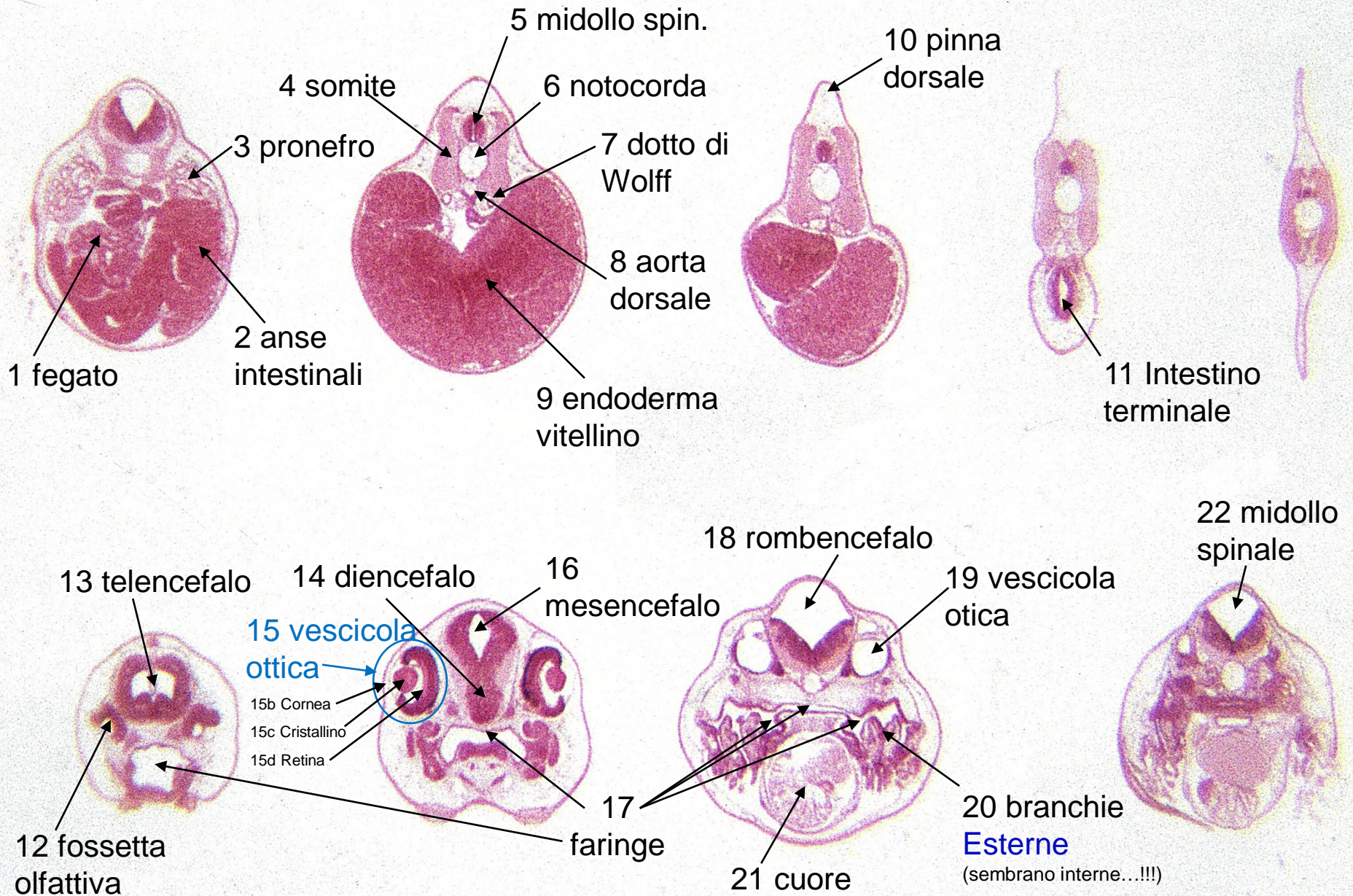
2- Sez. più dorsale delle 3



24 Rana - 4 mm - Sez. Frontali (più ventrali)



6 A: Rana - B: 10mm - C: c.s.= sez. trasversali



7

1 diencefalo
(peduncolo ottico)

2 pronefro

3 endoderma
vitellino

Ant.

Post.

4 anse
intestinali

A: Rana
B: 10mm
C: Sez. sagitt.

5 cavità tubo neurale

11 notocorda

6 futura
neuroipofisi

7 futura
adenoipofisi
(Tasca di Rathke)

8 faringe

10 fegato

12 calice ottico
+ cristallino

9 cuore



25 Rana - 10 mm - Sez. Frontali (più dorsali)

1- Sez. più dorsale delle 2

3 tetto del mesencefalo

4 tetto del rombencefalo

2- Sez. più ventrale delle 2

7 calice ottico

8 vescicola otica

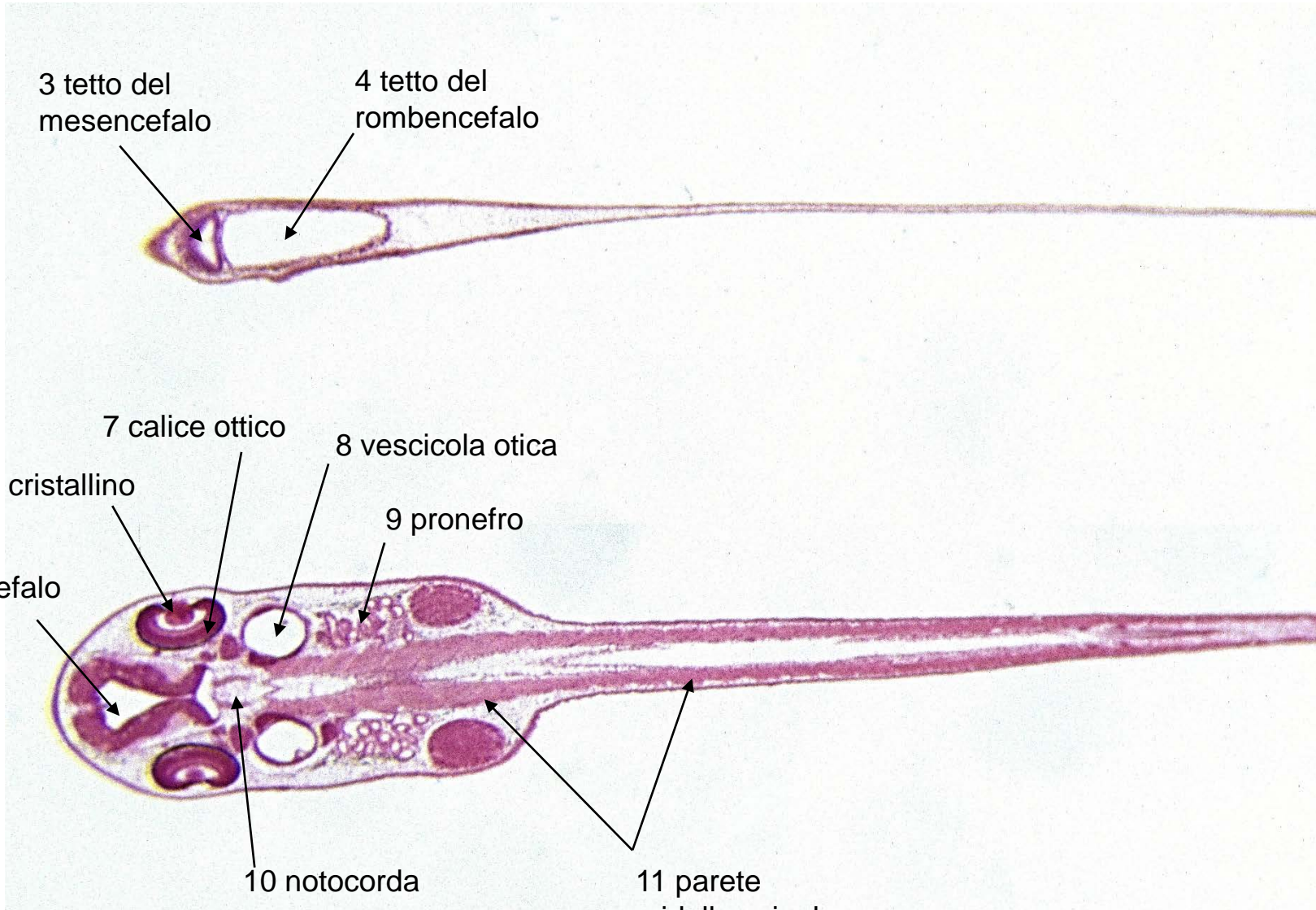
6 cristallino

9 pronefro

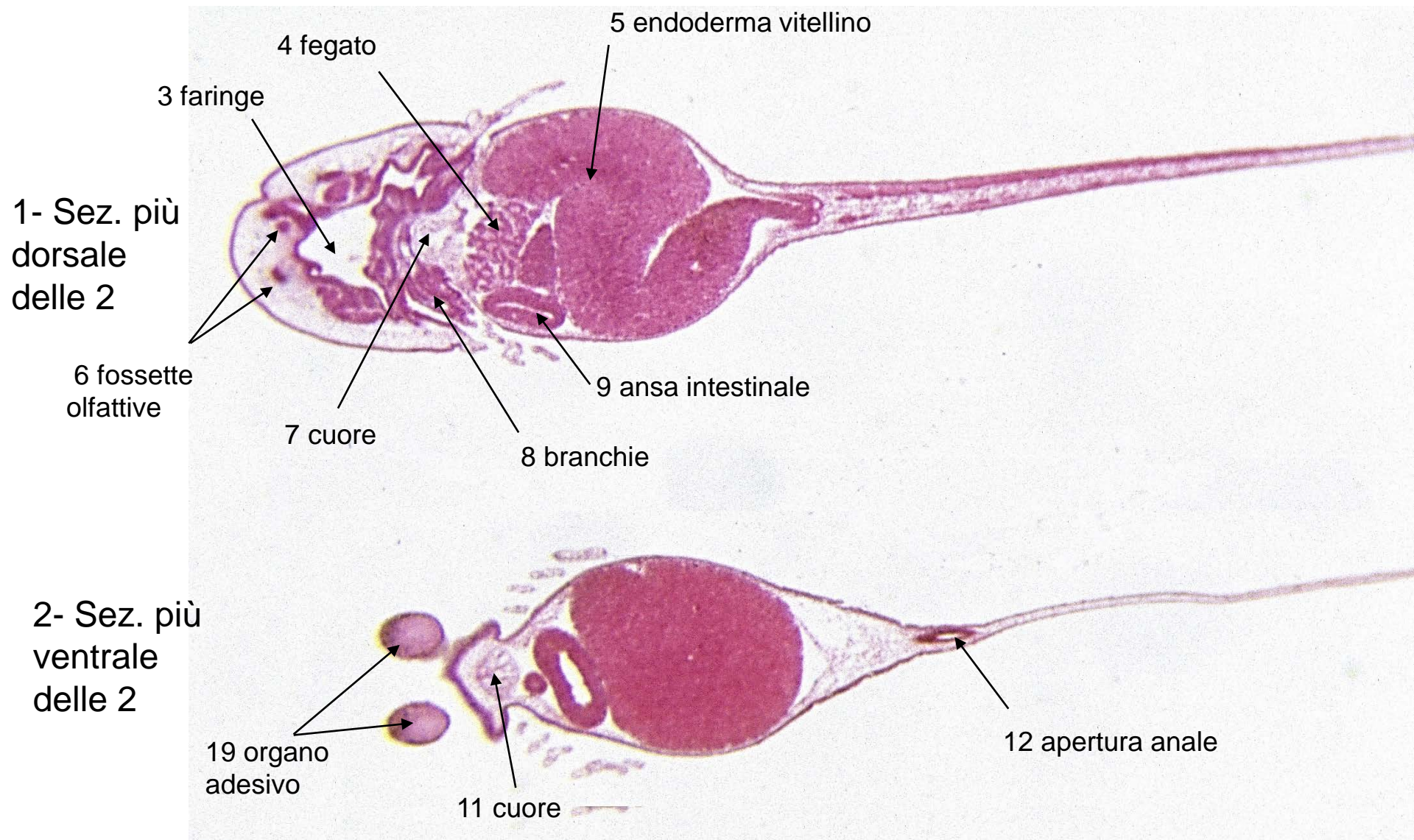
5 telencefalo

10 notocorda

11 parete midollo spinale

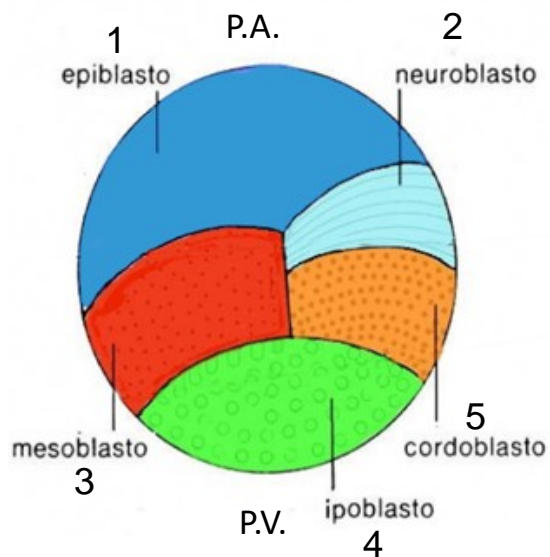


26 Rana - 10 mm - Sez. Frontali (più ventrali)

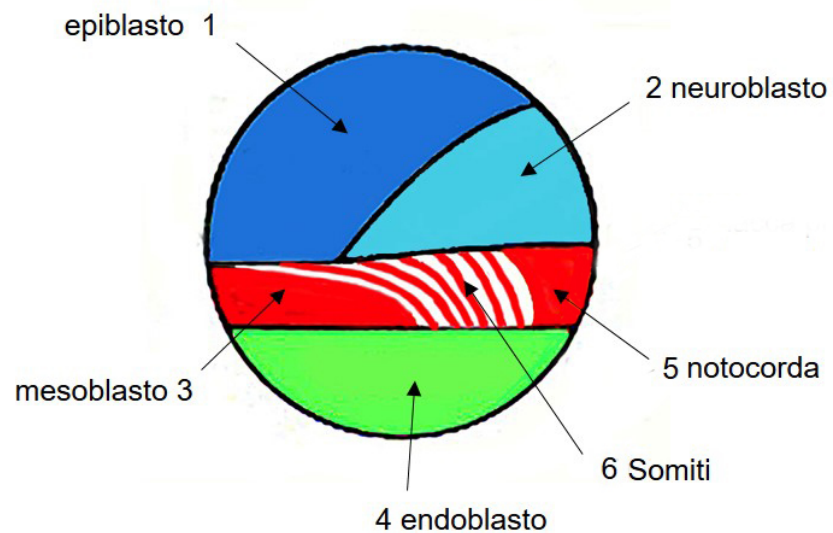


7b

A: Anfiosso - B: Gastrulazione - C: Mappa dei territori presuntivi



Iniziale

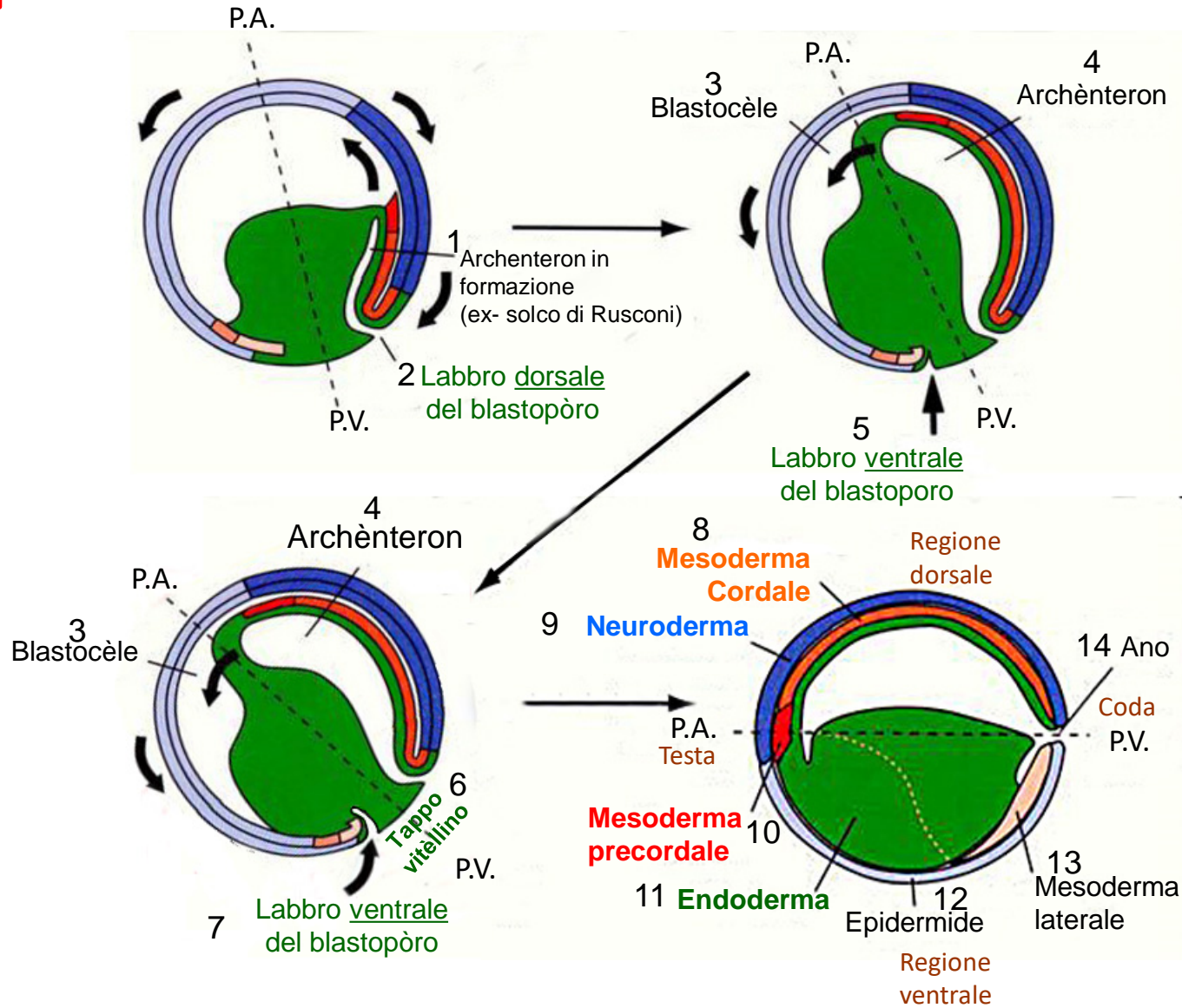


Più avanzata

Anfiosso

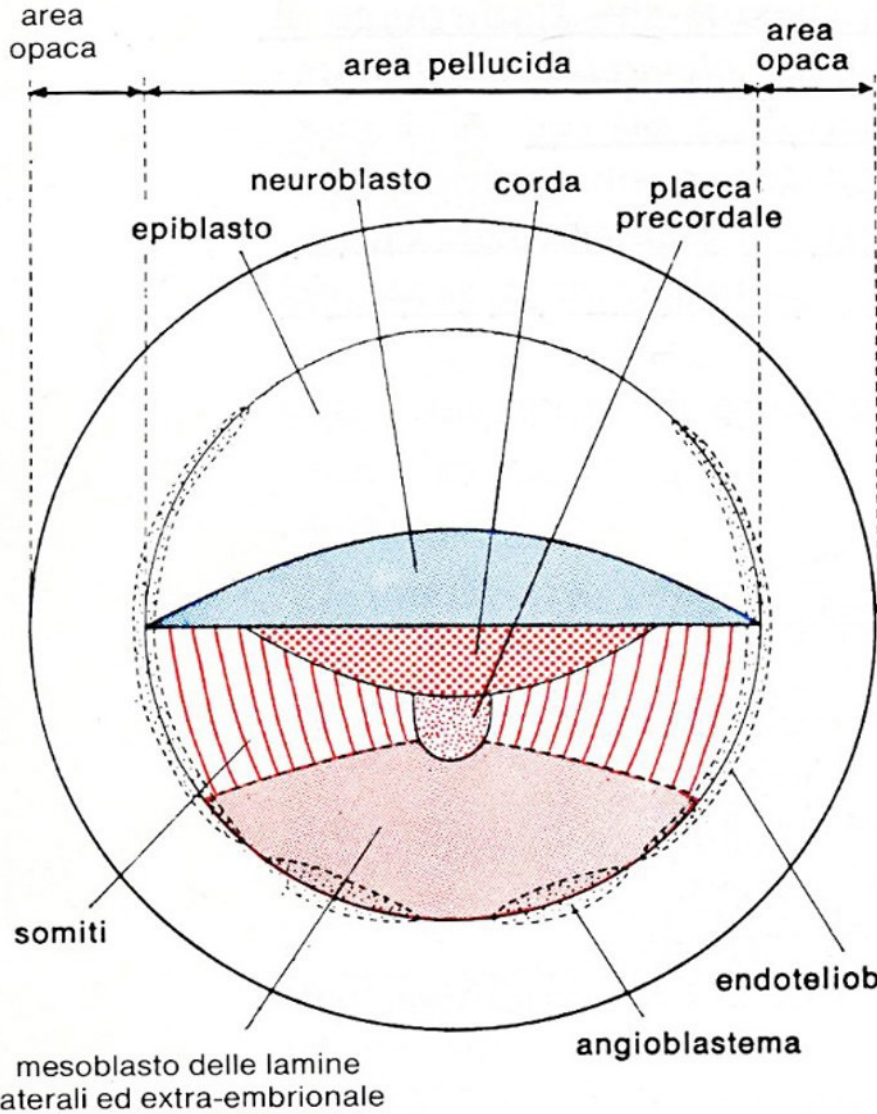
8

A: Anfibi - B: Gastrulazione - C: mappa dei territori presuntivi

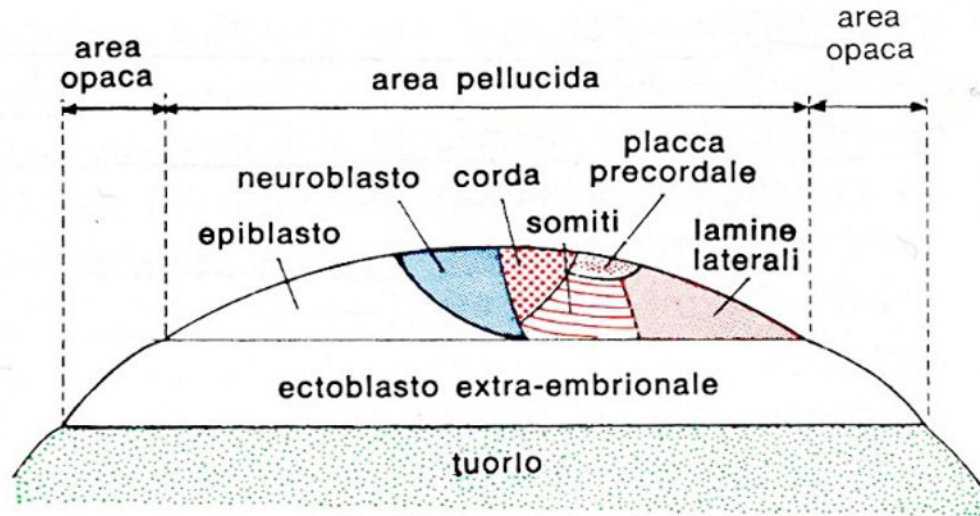


8b

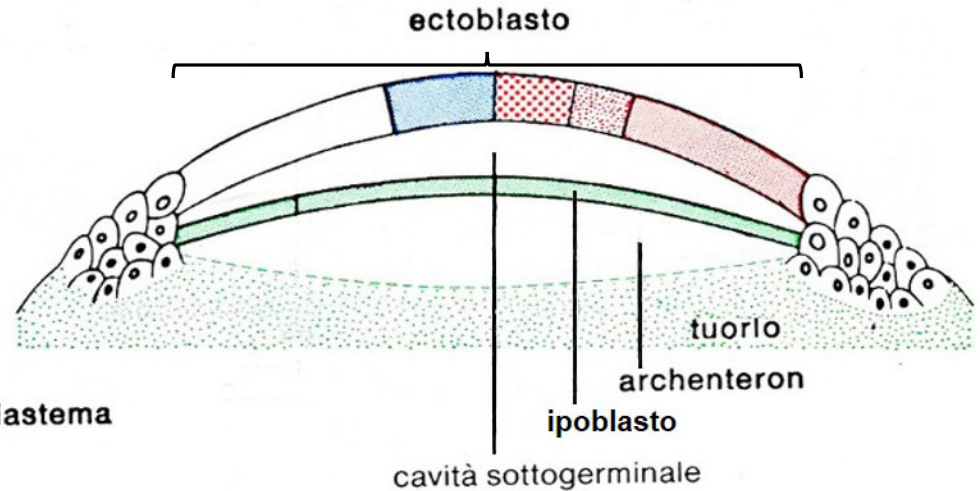
A: Pollo - B: Gastrulazione - C: Mappa dei territori presuntivi



A. Visione polare

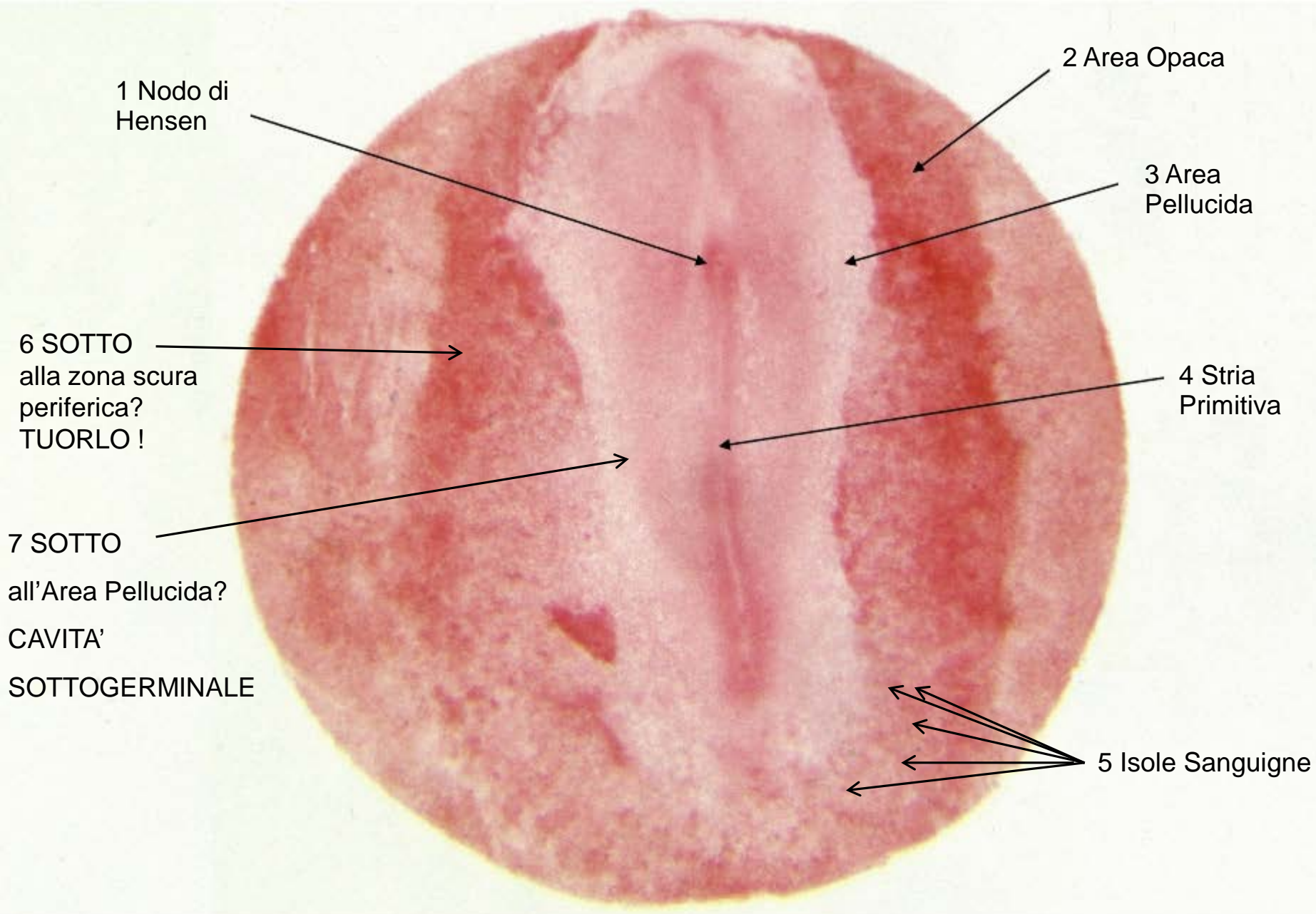


B. Visione laterale



C. Visione laterale in sezione

9 **A: Pollo - B: gastrulazione - C: W.M. = whole mount = apposizione "in toto"**



A: Pollo - B: 20 ore [Gastrul. con inizio Neurulaz.] - **C: W.M., apposizione "in toto"**

10

6 SOTTO alla zona
scura periferica?
TUORLO

7 SOTTO alla zona più
chiara centrale?

CAVITA'
SOTTOGERMINALE

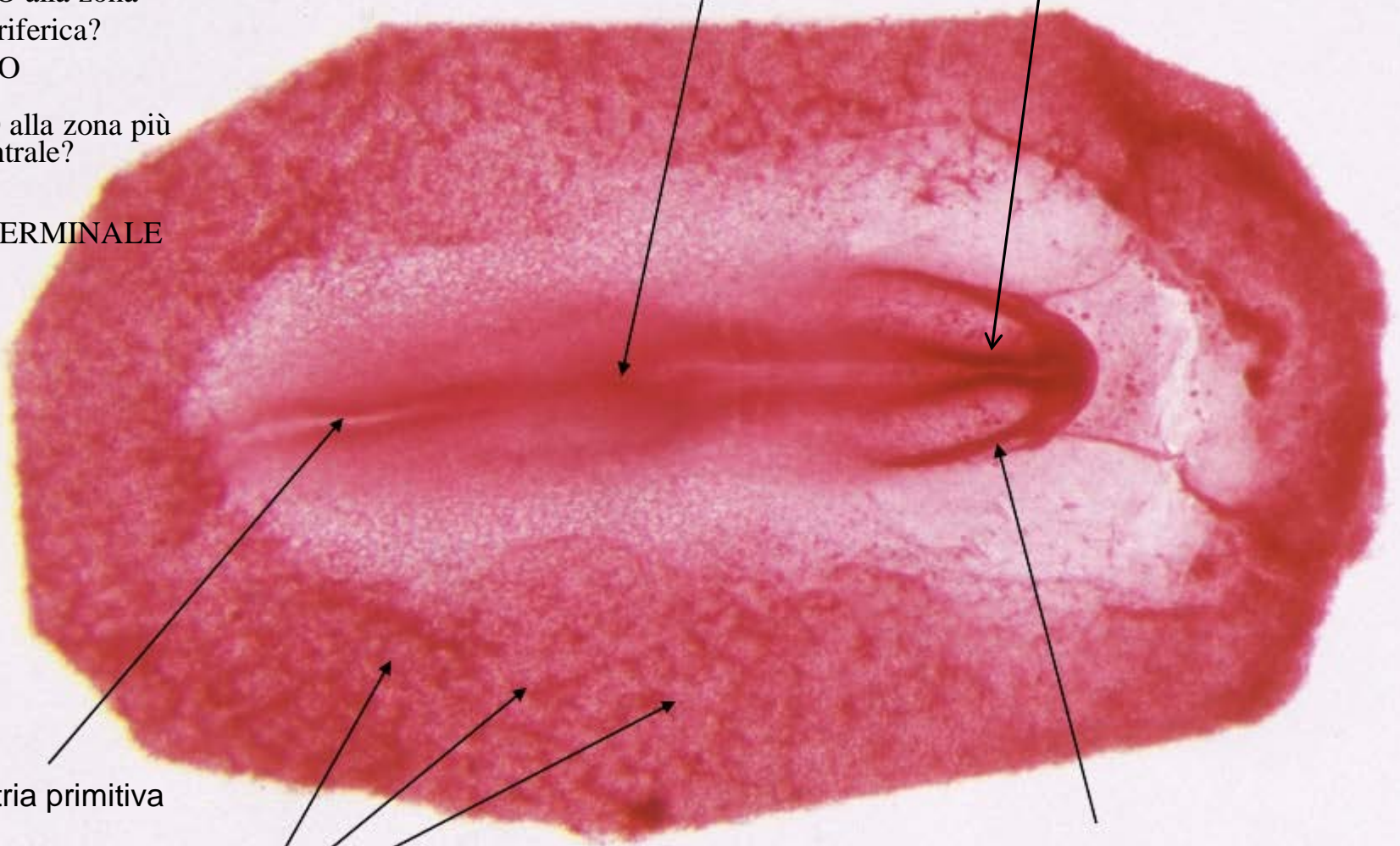
1 Nodo di Hensen

2 Pliche neurali

5 Stria primitiva

4 Isole sanguigne

3 Piega cefalica (inizio
sollevamento)



11 A: Pollo - B: 24 ore [Gastrulazione (con Neurulazione) - C: W.M., Apposiz. "in toto"]

8 SOTTO alla zona
scura periferica?
TUORLO

9 SOTTO alla zona
più chiara centrale?
CAVITA'
SOTTOGERMINALE

1 Nodo di Hensen

2 Neuroporo

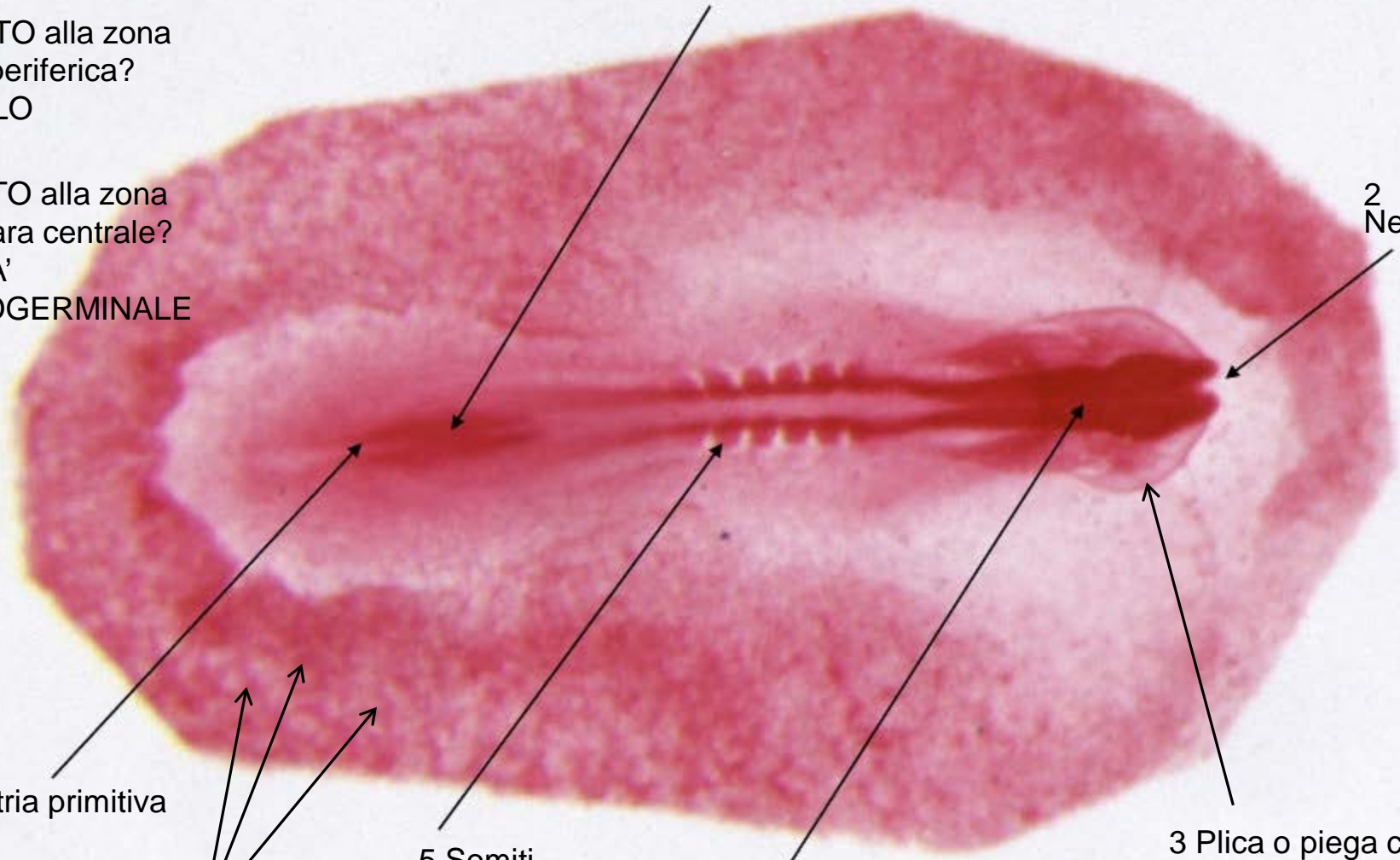
7 Stria primitiva

6 Isole sanguigne

5 Somiti

4 Pliche neurali in
fase di saldatura

3 Plica o piega cefalica
(sollevamento testa)



12 A: Pollo - B: 33 ore - C: W.M., apposiz. "in toto"

1 Tele + Diencefalo

2 Mesencefalo

3 Rombencefalo

5 Somiti

4 Midollo
spinale

6 Cuore

7 Vene
Onfalomesenteriche

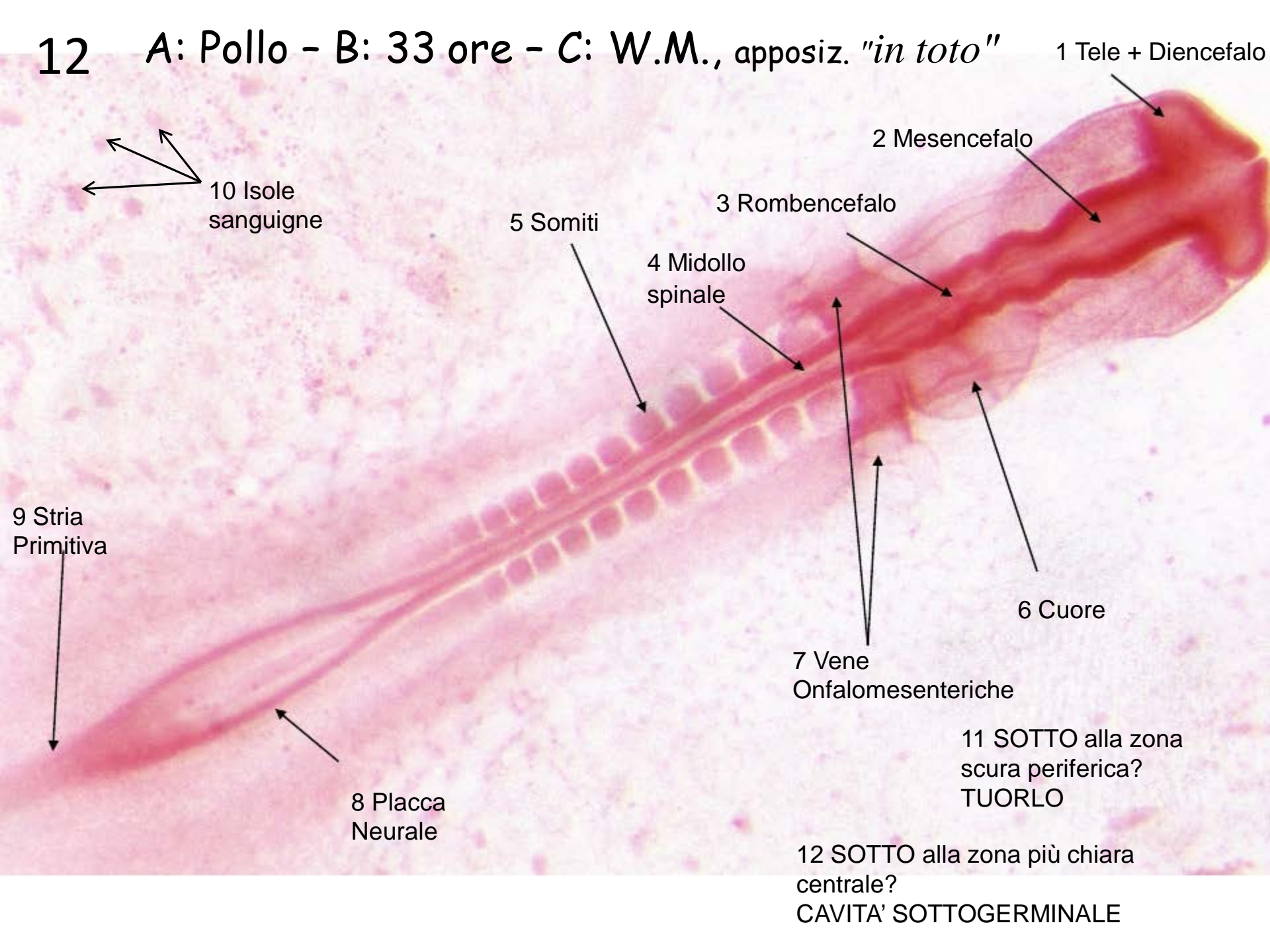
11 SOTTO alla zona
scura periferica?
TUORLO

12 SOTTO alla zona più chiara
centrale?
CAVITA' SOTTOGERMINALE

10 Isole
sanguigne

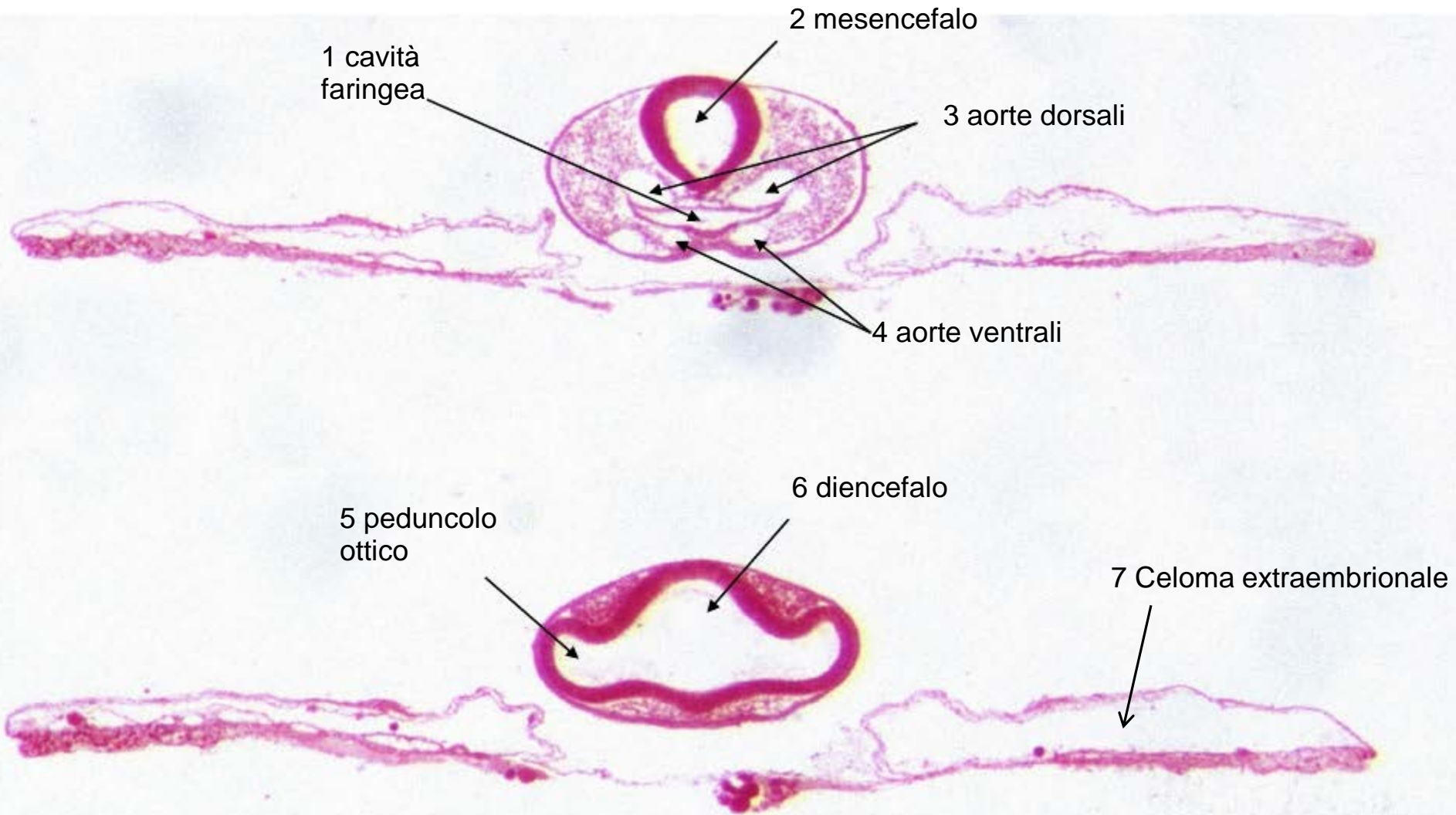
9 Stria
Primitiva

8 Placca
Neurale



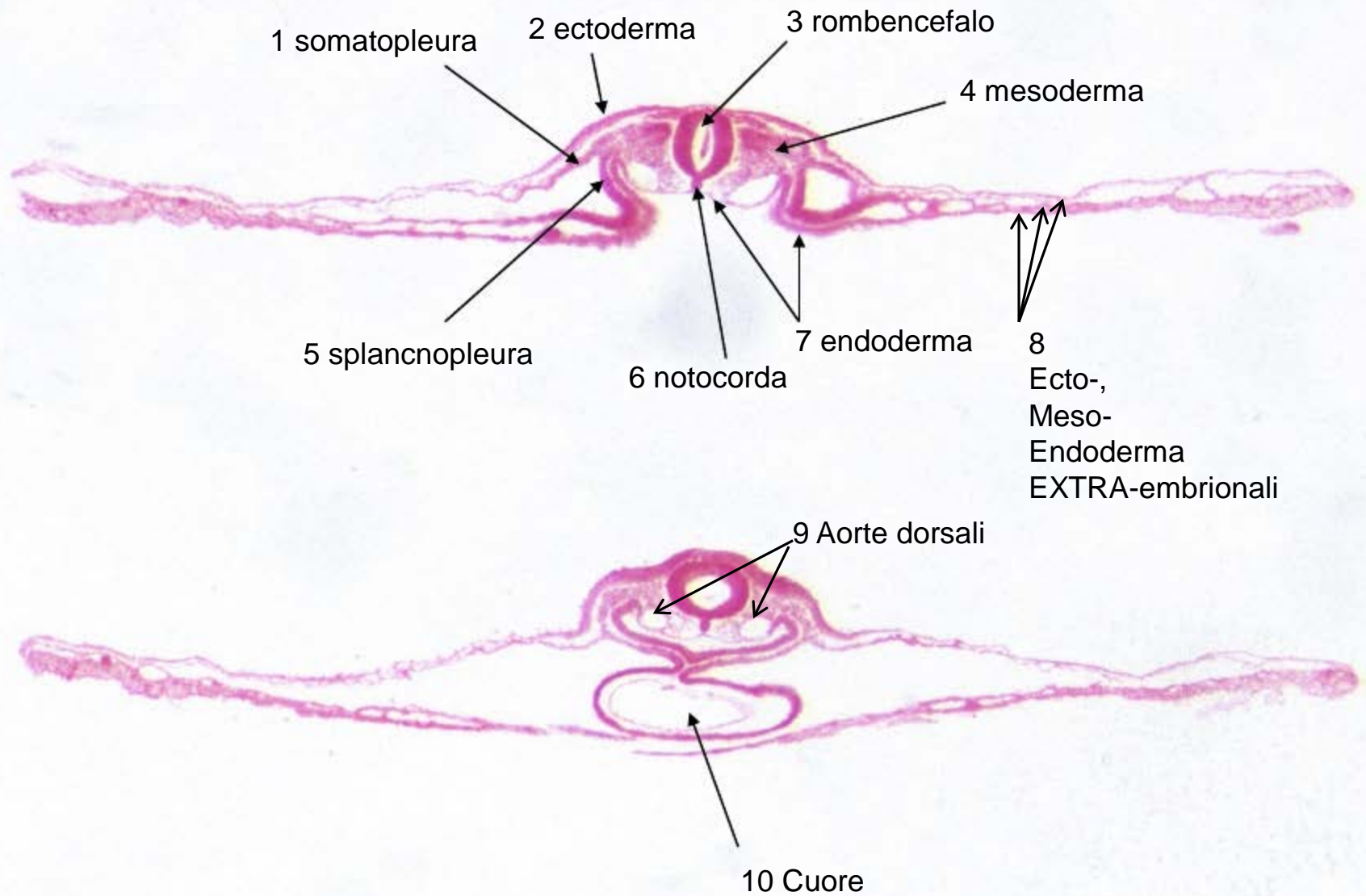
14

A: Pollo - B: 33 ore - C: sez. trasversali



15

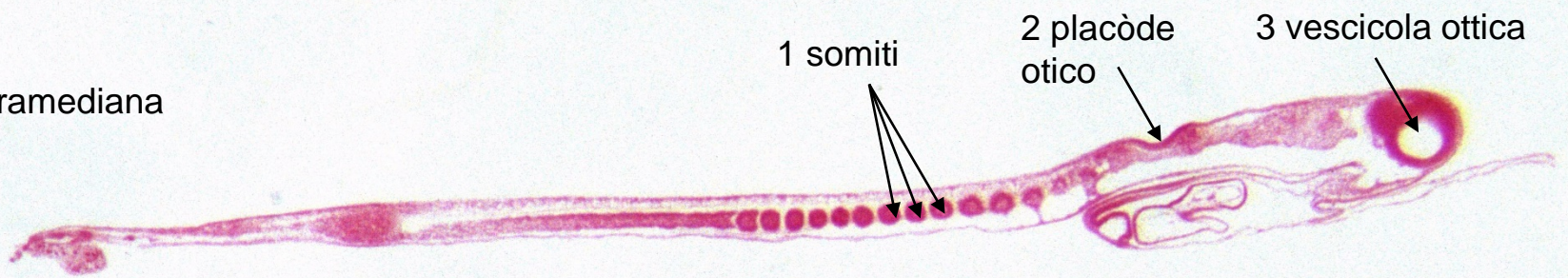
A: Pollo - B: 33 ore - C: sez. trasversali



16

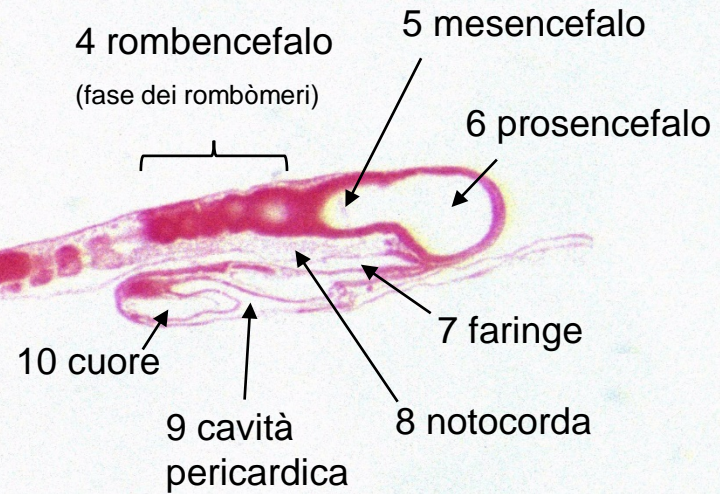
A: Pollo - B: 33 ore - C: sez. sagittali

D- paramediana



E- mediana imperfetta

In realtà è (per poco...) una paramediana



F- paramediana più esterna



1 Stria
primitiva

2 Nodo di
Hensen

3 Somiti

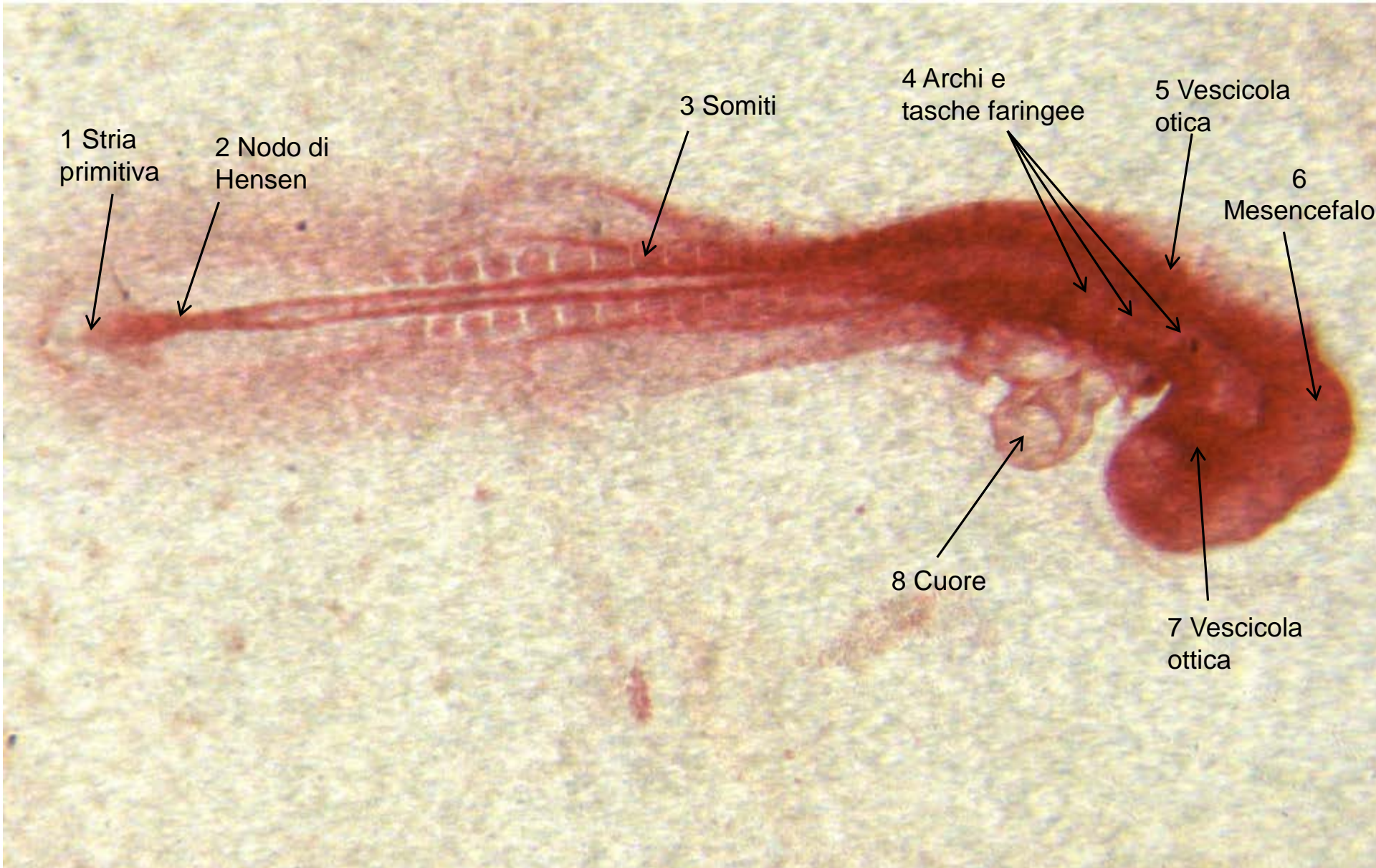
4 Archi e
tasche faringee

5 Vescicola
otica

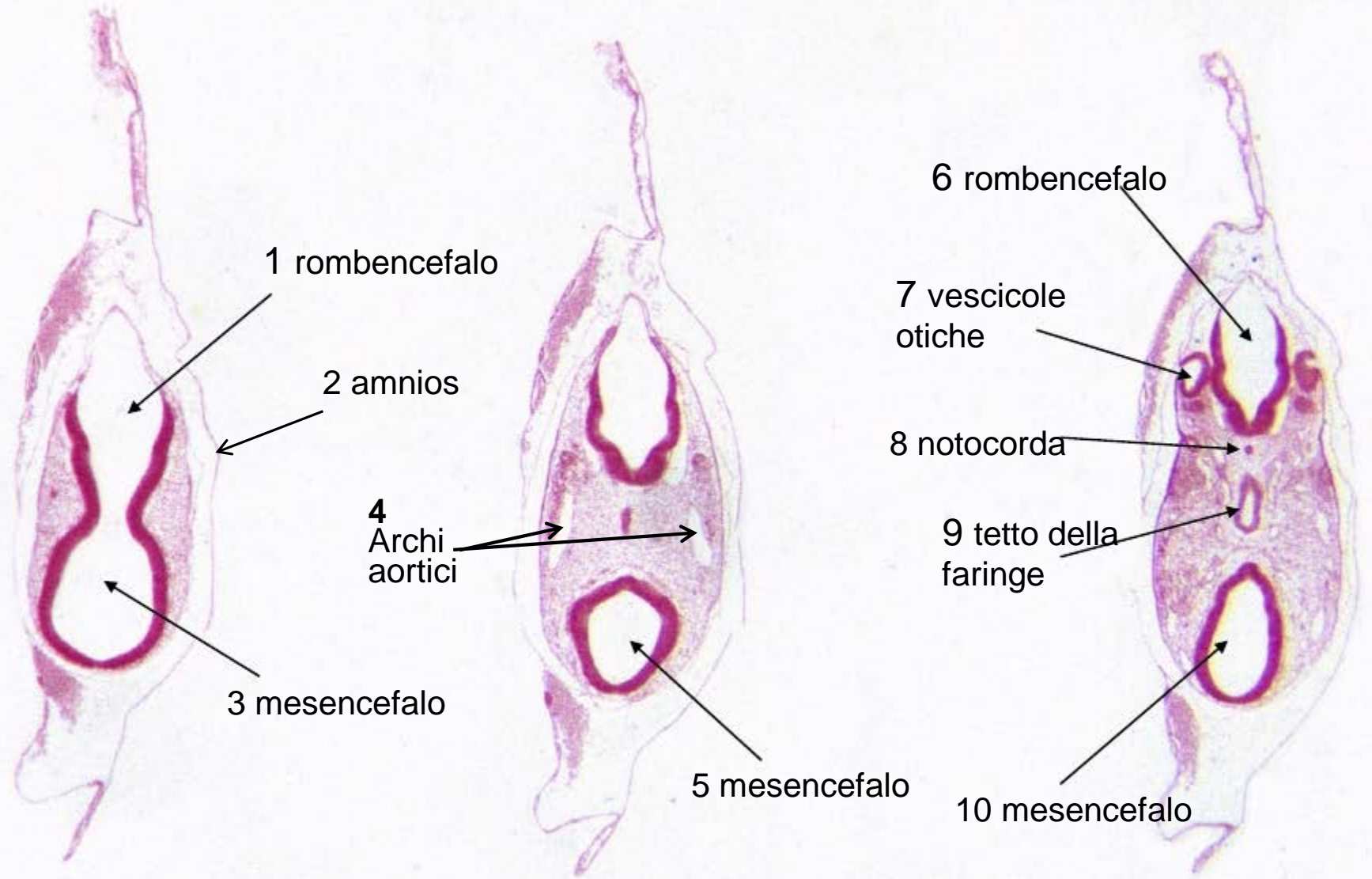
6
Mesencefalo

8 Cuore

7 Vescicola
otica

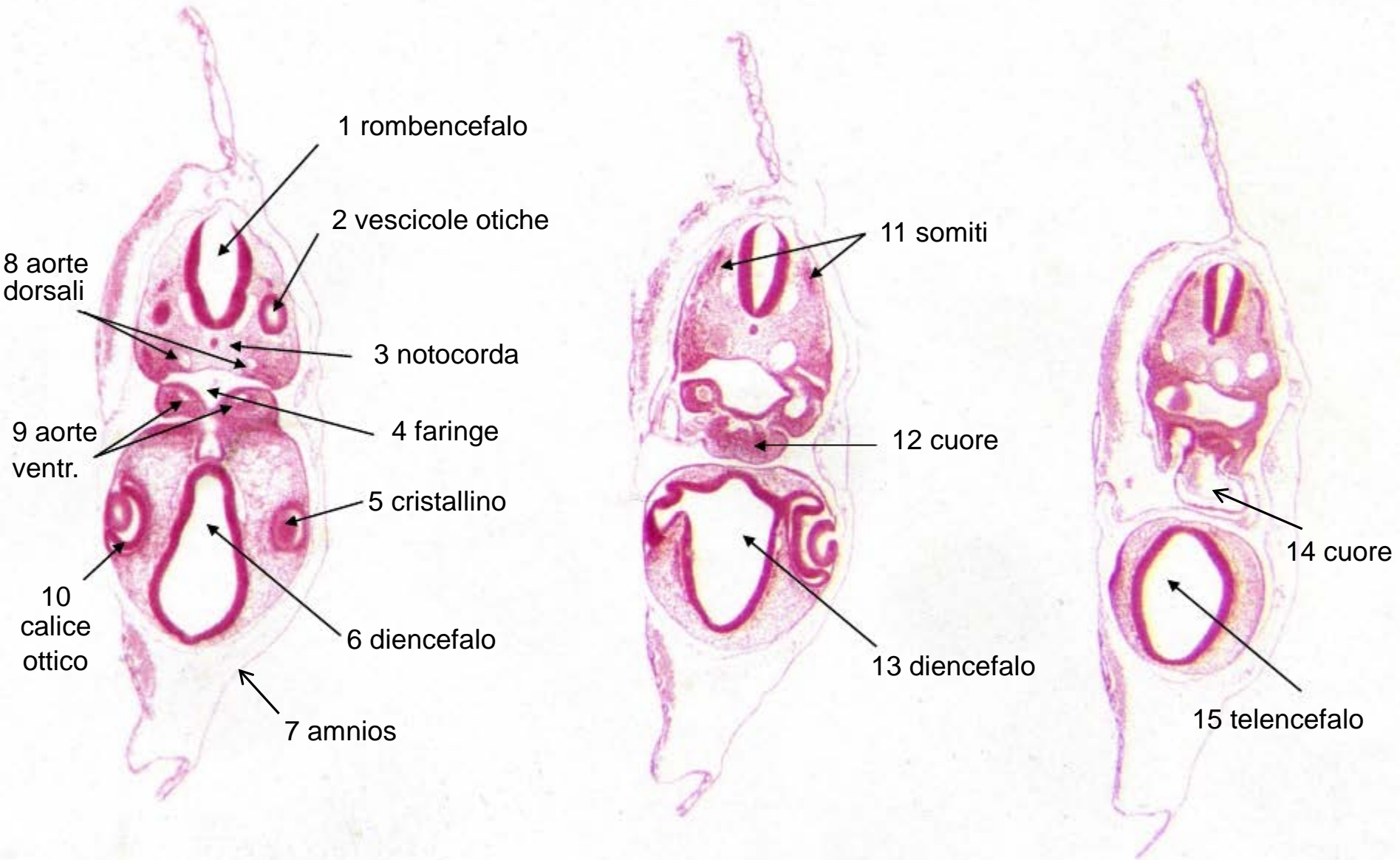


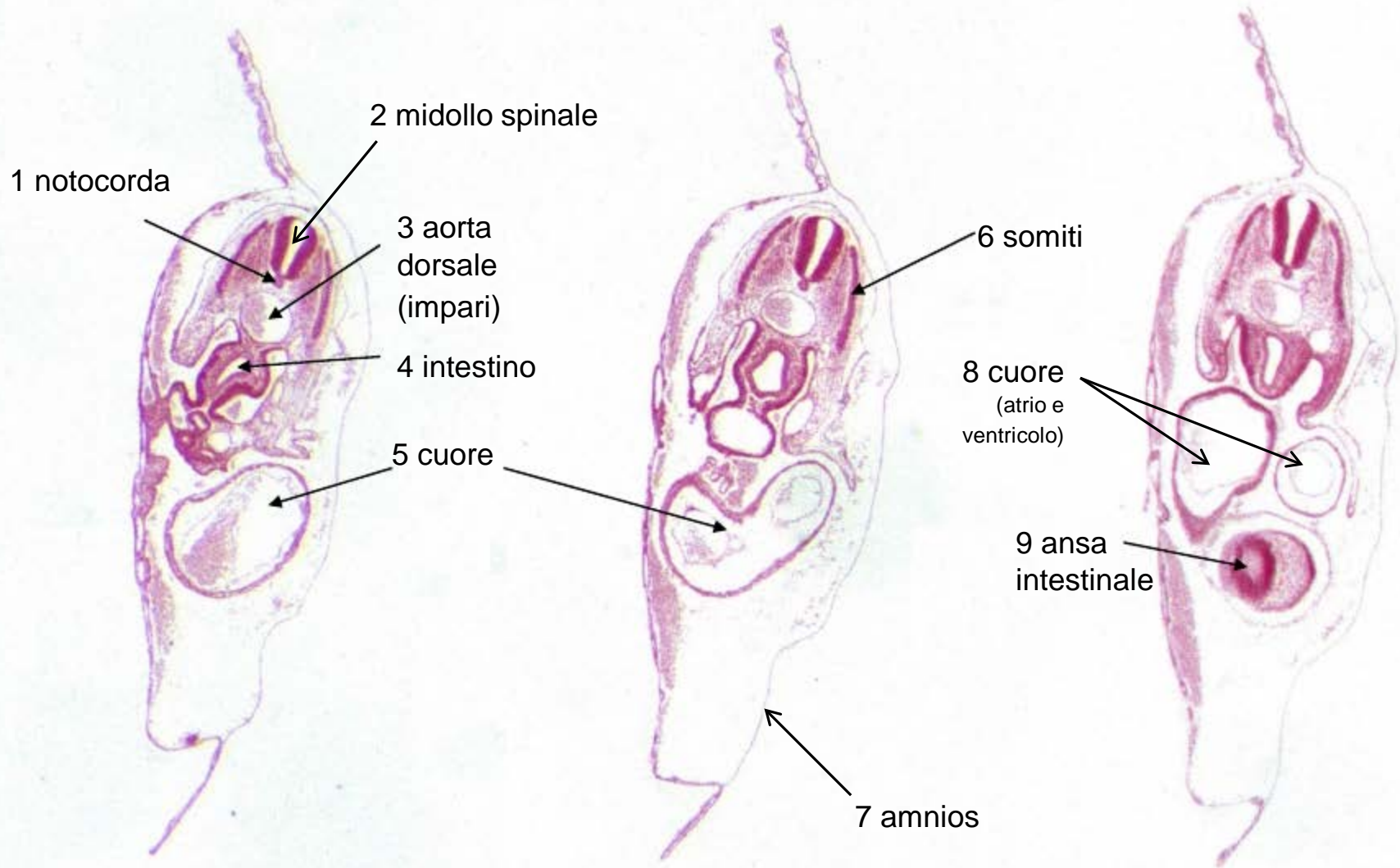
A: Pollo - B: 48 ore - C: sez. trasversali

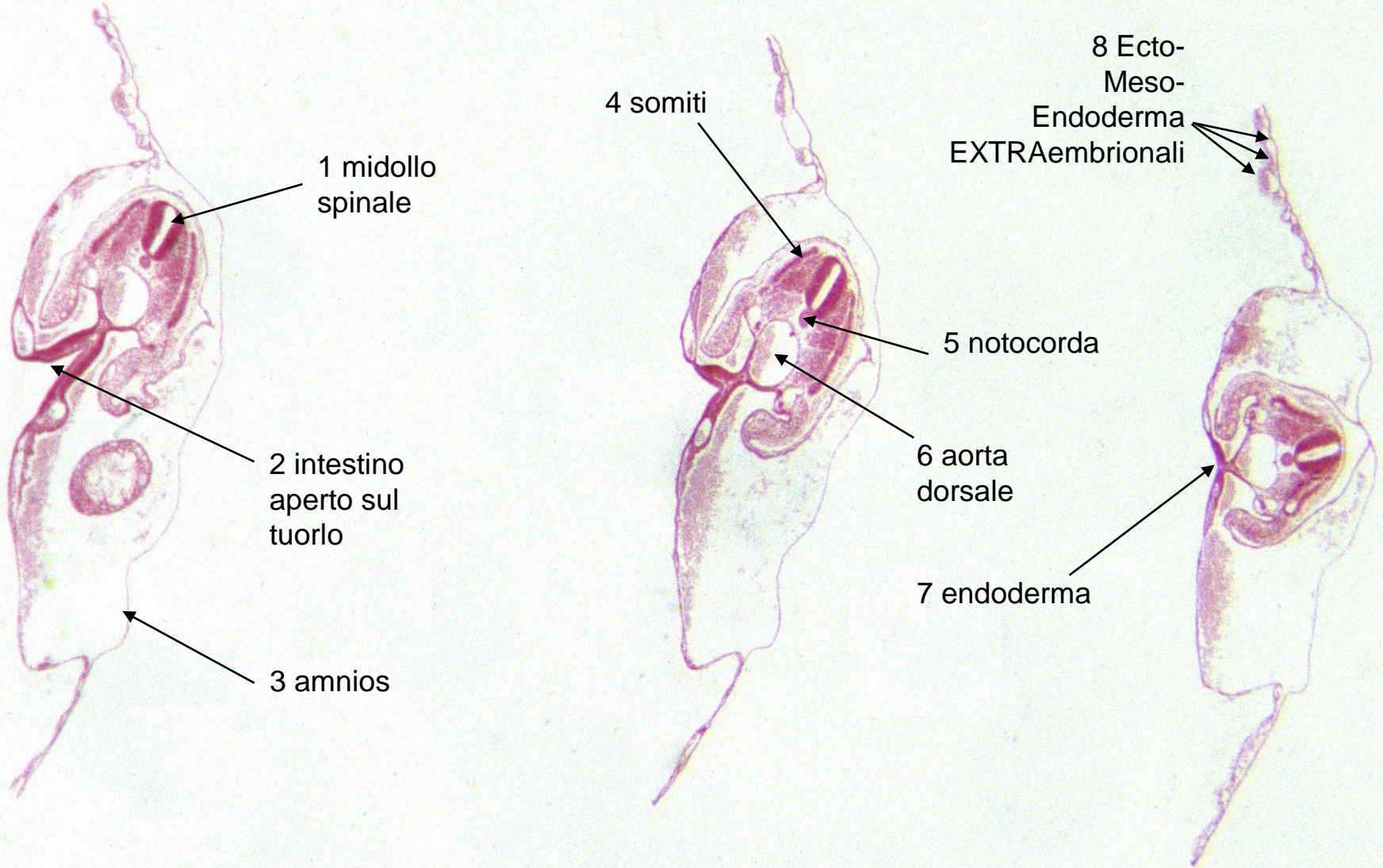


19

A: Pollo - B: 48 ore - C: sez. trasversali

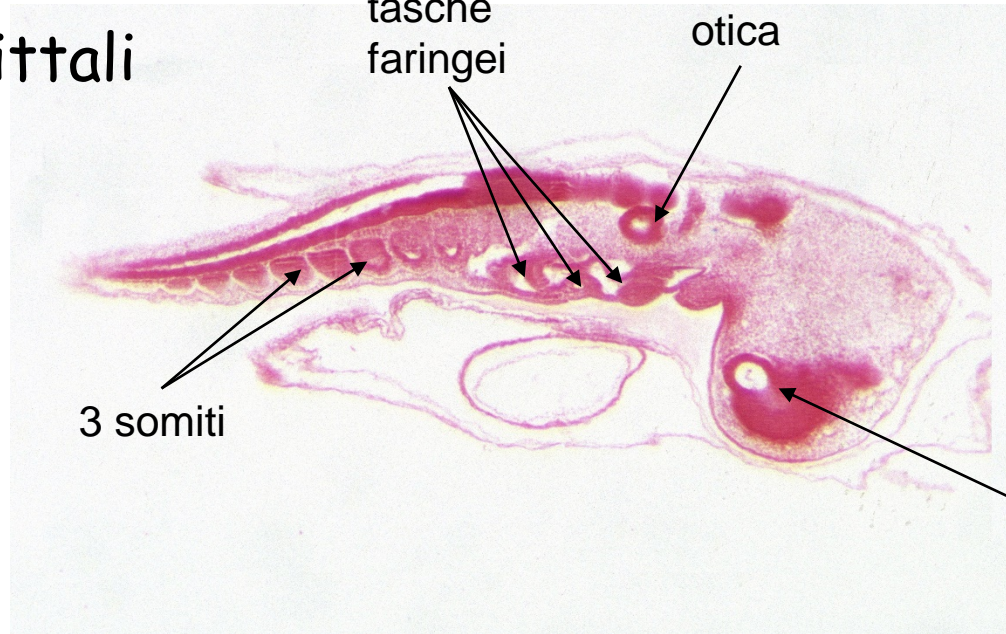




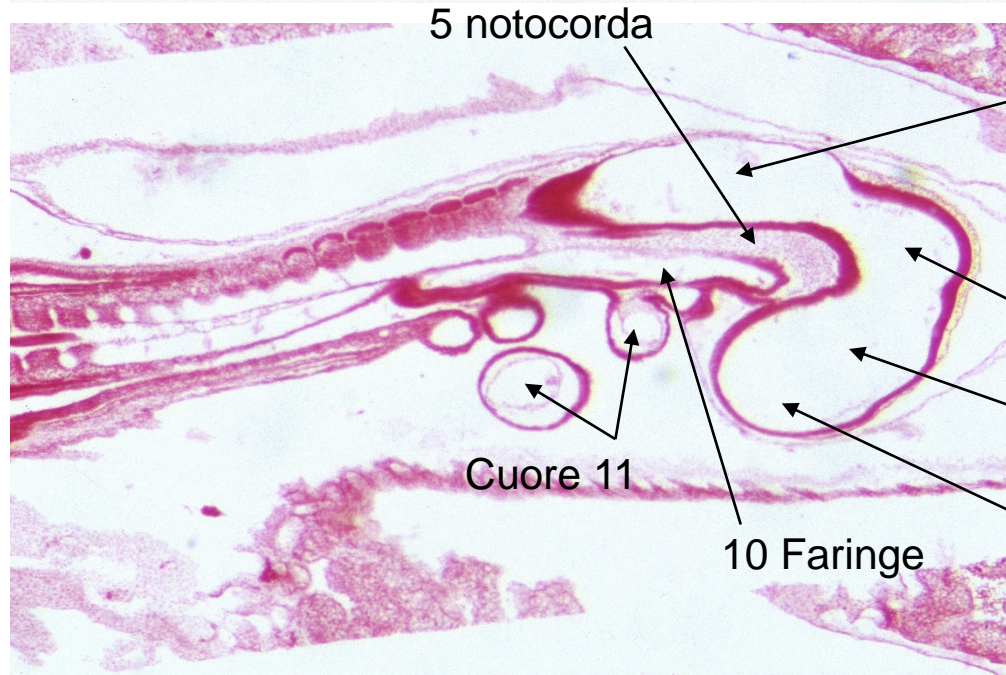


22 A: Pollo - B: 48 ore

C: sez. sagittali



D- paramediana



E- mediana